

**TECHNICAL MANUAL**

**ORGANIZATIONAL, INDIRECT SUPPORT AND GENERAL  
SUPPORT MAINTENANCE REPAIR PARTS AND  
SPECIAL TOOLS LIST (INCLUDING DEPOT MAINTENANCE  
;REPAIR PARTS AND SPECIAL TOOLS)**

**COMPRESSOR, RECIPROCATING: AIR,  
POWER DRIVEN, 5 CFM, 175 PSI  
(CHAMPION MODEL NO. HR2-3M-1)  
FSN 4310-75'2-9511**

**This copy is a reprint which includes current pages from  
Change 1.**

---

**HEADQUARTERS, DEPARTMENT OF THE ARMY**

**NOVEMBER 1972**

CHANGE }  
No. 1 }

HEADQUARTERS  
DEPARTMENT OF THE ARMY  
WASHINGTON, DC, 28 June 1974

**Organizational, Direct and General Support  
Maintenance Repair Parts and Special Tools List  
(Including Depot Maintenance Repair  
Parts and Special Tools List)  
COMPRESSOR, RECIPROCATING, AIR; POWER DRIVEN;  
5 CFM, 175 PSI (CHAMPION MODEL HR2-3M-1)  
FSN 4310-721-9511**

Current as of 2 April 1974

TM 5-4310-347-24P, 6 November 1972, is changed as follows:

Page v. Paragraph 4e is added as follows:

e. Useable on codes are shown in the description column. Uncoded items are applicable to all models. Identification of useable on codes in this publication are:

A-Serial Nos. 13565 thru 13622.

B-Serial Nos. 14433 thru 14449.

Paragraph 6, lines 5 and 6 are changed to read, Commander, U.S. Army Troop Support Command, ATTN: AMSTS-MPP, 4300 Goodfellow Boulevard, St. Louis, MO 63120.

**NOTE**

All changes, additions, or deletions listed below will be appropriately reflected in the indexes.

Page 1, Line 1, column 2. FSN is changed to FSN 5306-225-9084; column 3, Mfg. P/N and code is changed to read, "MS90726-39 (96906)". Following Line 12. Add: Column 1, X20; column 2, 5310-637-9341; column 3, WASHER, LOCK, 3/8 in., MS35338-46 (96906) B; EA, 4; fig. 2, item 8. Lines 17 and 18, column 3. Add useable on code "A".

Following Line 18. Add: Column 1, X20; column 3, SCREW, CAP, HEX, 3/8-16 X 1 1/2, M1460 (11568)B; EA, 4; Fig. 2, item 9. Page 2. lines 3 and 4, column 3. Add useable on code "A". Line 5 is deleted.

Following Line 5 Add: Column 1, P20R; column 3, MOTOR, ELECTRIC; 1740 RPM, 115V-230V, 1 PH, 2HP, 74065 (92940)B; EA, 1, Fig. 3.1. Column 1, X20; column 3, KEY, A02741-22-00(92940)B; EA, 1; fig. 3.1, item 16.

Line 16, column 3, Mfg. P/N and code is changed to "AN525-8R6 (88044)".

Line 19, column 2. FSN is changed to FSN 4730-231-2410; column 3, Mfg. P/N and code is changed to "WWP521 (31348)".

Page 6. line 7, column 2. FSN is changed to FSN 4730-014-6797; column 3, description is changed to ADAPTER, STRAIGHT, LL-2-40.

Page 8. line 1, column 2. FSN. is changed to FSN 5306-225-9084; column 3, Mfg. P/N and code is changed to "MS90726-39 (96906)".

Lines 17 and 18, column 3. Add useable on code "A". Following Line 17. Add: Column 1, X20; column 2, 5310-637-9341; column 3, WASHER, LOCK, 3/8 in., MS35338-46 (96906)B; EA, 4; fig. 2, item 8.

Following Line 18. Add: Column X20; column 3, SCREW, CAP, HEX 3/8-16 X 1 1/2, M1460 (11568)B; EA, 4; fig 2, item 9.

Page 9, Group 03, ELECTRICAL MOTOR, add useable on code "A" in column 3 for all items, fig. 3, 1 thru 31.

Line 11, column 3. Change description to read "BOLT, THRU".

Line 16, column 3. Change description to read "WASHER, SPRING TENSION".

Line 17, column 2. FSN is changed to FSN 3110-516-5557; column 3, description is changed to read "BEARING, BALL".

Page 10. Following line 10 add the following items. Column 1, P20R; column 3, MOTOR, ELECTRIC; 1740 RPM, 115V-230V, 1 PH, 2 HP, 74065 (92940)B; EA, 1, Fig. 3.1.

Column 1, X2F; column 3, BOX, CONDUIT, 09C01042-01-00 (92940)B; EA, 1; fig 3.1, item 1.

Column 1, X2F; column 3, SPACER, CONDUIT BOX, 29A01631-01-00 (92940)B; EA, 1; fig 3.1, item 2.

Column 1, X2F; column 3, BOLT, THRU, 19A03515-38-01 (92940)B; EA, 1; fig 3.1, item 3.

Column 1, X2F; column 3, END SHIELD, SHAFT END, 07C02357-06-04 (92940)B; EA, 1; fig 3.1, item 4.

Column 1, X2F; column 3, ROTOR AND SHAFT ASSY, 74065ROT (92940)B; EA, 1; fig 3.1, item 5.

Column 1, PF; column 3, BEARING, SHAFT END, 04A09101-05-00 (92940)B; EA, 1; fig 3.1, item 6.

Column 1, X2F; column 3, END SHIELD, 07C02593-04-01 (92940)B; EA, 1; fig 3.1, item 7.

Column 1, PF; column 3, BEARING, 04A09101-03-00 (92940)B, EA, 1; fig 3.1, item 8.

Column 1, X2F; column 3, FAN, INTERNAL, 12B04339-01-00 (92940)B; EA, 1; fig 3.1, item 9.

Column 1, PF; column 3, CAPACITOR, 15A08840-19-00 (92940)B; EA, 1; fig 3.1, item 10.

Column 1, X2F; column 3, CASE CAPACITOR, 16B04599-01-00 (92940)B; EA, 1; fig 3.1, item 11.

Column 1, PF; column 3, SWITCH, CENTRIFUGAL, 17A02511-04-00 (92940)B; EA, 1; fig 3.1, item 12.

Column 1, PF; column 3, SWITCH, STATIONARY, 18A02514-01-00 (92940)B; EA, 1; fig 3.1, item 13.

Column 1, X2F; column 3, INSULATION, SWITCH, 21A03481-01-00 (92940)B; EA, 1; fig 3.1, item 14.

Column 1, PF; column 3, WASHER, SPRING TENSION, 22A02292-04-00 (92940)B; EA, 1; fig 3.1, item 15.

Column 1, X20; column 3, KEY, 23A0271-22-00 (92940)B; EA, 1; fig 3.1, item 16.

Column 1, X2F; column 3, SPACER, SHAFT END, 28A05622-03-00 (92940)B; EA, 1; fig 3.1, item 17.

Column 1, X2F; column 3, SPACER, 28A08256-01-00 (92940)B; EA, 1; fig 3.1, item 18.

Column 1, X2F; column 3, STATOR ASSY, 74065STA (92940)B; EA, 1; fig 3.1, item 19.

Column 1, X2F; column 3, DISC, INSULATING, 21A02118-03-00 (92940)B; EA, 1; fig 3.1, item 20.

Line 15, column 3. Add useable on code "A".

Following Line 15 add: Column 1, PF; column 3, MUFFLER ASSEMBLY, INTAKE, Z66A (11568)B; EA, 1; fig 4, item 5.

Line 22, column 3. Add useable on code "A".

Following line 22 add: Column 1, X2F; column 3, MANIFOLD, INTAKE, SE5-2B (11568)B; EA, 1, fig 4, item 12.

Page 11, line 17, column 3. P/N is changed to read "RE10-63".

Page 12, line 20, column 2. FSN is changed to FSN 5305-963-7429; column 3, Mfg. P/N and code is changed to MS16998-28 (96906).

Line 22, column 2. FSN is changed to FSN 5330-585-4283.

Page 13, line 1, column 2. FSN is changed to FSN 3110-198-1050; column 3, Mfg. P/N and code is changed to MS19060-22 (96906).

Line 22, column 2. FSN is changed to FSN 4730-231-2410; column 3, Mfg. P/N and code is changed to WWP-521 (81348)

Page 15, line 13, column 2. FSN is changed to FSN 5330-927-5652.

Page 16, line 7, column 3. Mfg. P/N and code is changed to MS35338-46 (96906).

Line 9, column 3. Mfg. P/N and code is changed to MS90725-60 (96906).

Line 14, column 3. Add useable on code "A".

Following Line 14 add: Column 1, PF; column 3, COIL, HEATER RELAY, H-37 (23826)B; EA, 1; fig 8, item 12.

Line 15, column 3. Add useable on code "A".

Following line 15 add: Column 1, PF; column 3, COIL, HEATER RELAY, H-44 (23826)B; EA, 1; fig 8, item 12.

Page 17, line 9, column 2. FSN is changed to FSN 5360-756-9452.

Page 21, line 1, column 2. FSN is changed to FSN 4730-014-6797; column 3, description is changed to read ADAPTOR, STRAIGHT.

Line 12, column 3. Mfg. P/N and code is changed to AN525-8R6 (88044).

Page 25, figure 3. Add after figure title (Serial Nos. 13565 thru 13622).

**By Order of the Secretary of the Army:**

CREIGHTON W. ABRAMS  
*General, United States Army*  
*Chief of Staff*

Official:

VERNE L. BOWERS  
*Major General, United States Army*  
*The Adjutant General*

Distribution:

To be distributed in accordance with DA Form 12-25A, (qty rqr block No. 6) organizational maintenance requirements for Air Compressor, 5 CFM.

**ORGANIZATIONAL, DIRECT SUPPORT AND GENERAL SUPPORT  
 MAINTENANCE IREPAIR PARTS  
 AND SPECIAL TOOLS LIST INCLUDING DEPOT MAINTENANCE  
 REPAIR PARTS ANID SPECIAL TOOLS)**

**COMPRESSOR, RECIPROCATING: AIR,  
 POWER IDRIVEN, 5 CFM, 175 PSI  
 (CHAMPION MODEL HR2-3M-1')  
 FSN 4310-752-9511  
 Current as of 17 October 1972**

	Page	Illus. Figure
SECTION I. INTRODUCTION.....	iii	
II. PRESCRIBED LOAD ALLOWANCE LIST (Not Applicable)		
III. ORGANIZATIONAL MAINTENANCE REPAIR PARTS LIST .....	1	
Group 01. Belt Guard Shell and Brackets .....	1	1
02. V Belts, Pulley, 'Motor Rail, Electrical Conduit, and Wiring.....	1	2
03. Electrical Motor.....	2	3
04. Compressor Assembly and Components.....	2	
Compressor cylinder and manifold assemblies .....		4
Crankcase and unloader assembly .....		6
05. Magnetic Starter with Pressure Switch and Bracket .....	3	8
06. Globe Valve, Outlet Tube, Piping, and Mounting Bracket .....	3	9
07. Strip Heater, Thermostat, and Air Filter .....	4	
Strip heater, thermostat, and electrical conduit.....		10
Air filter .....		11
08. Dehydrator.....	4	12
09. Regulator .....	6	13
10. Hose Assembly with Fittings .....	6	14
11. Air Receiver and Components .....	7	15
SECTION IV. ORGANIZATIONAL MAINTENANCE SPECIAL TOOLS LIST (Not Applicable)		
V. DIRECT SUPPORT, GENERAL SUPPORT AND DE:POT MAINTENANCE REPAIR PARTS LIST .....	8	
Group 01. Belt Guard Shell and Brackets .....	8	1
02. V Belts, Pulley, 'Motor Rail, Electrical Conduit, and Wiring.....	8	2
03. Electrical Motor.....	3	3
04. Compressor Assembly and Components.....	10	
Compressor cylinder and manifold assemblies.....		4
Compressor valve assemblies .....		5
Crankcase and unloader assembly.....		6
Crankshaft, piston and connecting rod assemblies .....		7
05. Magnetic Starter With Pressure Switch and Bracket .....	16	8
06. Globe Valve, Outlet Tube, Piping, and Mounting Bracket.....	17	9
07. Strip Heater, Thermostat, and Air Filter .....	18	
Strip heater, thermostat, and electrical conduit.....		10
Air filter .....		11
08. Dehydrator .....	19	12
09. Regulator .....	20	13
10. Hose Assembly with Fittings .....	20	14
11. Air Receiver and Components .....	21	15

SECTION VI.	DIRECT SUPPORT, GENERAL SUPPORT AND DEPOT MAINTENANCE SPECIAL TOOLS LIST (Not Applicable)		
VII.	FEDERAL STOCK NUMBER AND REFERENCE NUMBER INDEX .....	38	

SECTION I.

INTRODUCTION

**1. Scope**

a. This manual lists repair parts, special tools, test and support equipment required for the performance of organizational, direct support, general support, and depot maintenance of the compressor.

. Repair parts listed represent those authorized for use at indicated maintenance levels and will be requisitioned on an "as required" basis until stockage is justified by demand in accordance with AR 7.10-2.

**2. General**

This Repair Parts and Special Tools List is divided into the following sections:

. *Prescribed Load Allowance List-Section II* (Not Applicable).

. *Repair Parts List-Section III* A list of repair parts authorized at the organizational level or the performance of maintenance. The list also includes parts which must be removed for replacement of the authorized parts. Parts lists are composed of assembly groups in ascending numerical sequence, with the parts in each group listed in figure and item number sequence.

c. *Special Tools, Test and Support Equipment-Section IV* (Not Applicable).

d. *Repair Parts List-Section V* A list of repair parts authorized at the direct support, general support, and depot levels for the performance of maintenance. The list also includes parts which must be removed for the replacement of the authorized parts. Parts list are composed of assembly groups in ascending numerical sequence, with parts in each group listed in figure and item number sequence.

e. *Special Tools, Test and Support Equipment-Section VI* (Not Applicable).

f. *Federal Stock Number and Reference Number Index-Section VII* A list, in ascending numerical sequence, of all Federal stock numbers appearing in the listings, followed by a list, in alpha-numeric sequence, of all reference numbers appearing in the listings. Federal stock number and reference numbers are cross-referenced to each illustration figure and/or item number appearance.

**3. Explanation of Columns**

The following provides an explanation of columns found in the tabular listings in sections III through VI

a. *Source, Maintenance, and Recoverability Codes (SMR).*

(1) Source code indicates the source for the listed items. Source codes are:

<i>Code</i>	<i>Explanation</i>
P	Repair Parts, Special Tools and Test Equipment supplied from the GSA/DSA or Army supply system, and authorized for use at indicated maintenance levels.
P2	Repair Parts, Special Tools and Test Equipment which are procured and stocked for insurance purposes because the combat or military essentiality of the end item dictates that a minimum quantity be available in the supply system.
P9	Assigned to items which are NSA design controlled: unique repair parts, special tools, test, measuring, and diagnostic equipment which are stocked and supplied by the Army COMSEC Logistic System and which are not subject to the provisions of AR 380-41.
P10	Assigned to items which are NSA design controlled: special tools, test, measuring, and diagnostic equipment for COMSEC support which are accountable under the provisions of AR 380-41 and which are stocked and supplied by the Army COMSEC Logistic System.
M	Repair Parts, Special Tools and Test Equipment which are not procured or stocked as such in the supply system but are to be manufactured at indicated maintenance levels.
A	Assemblies which are not procured or stocked as such, but are made up of two or more units. Such component units carry individual stock numbers and descriptions, are procured and stocked separately, and can be assembled to form the required assembly at indicated maintenance categories.
X	Parts and assemblies that are not procured or stocked because the failure rate is normally below that of the applicable end item or component.

<i>Code</i>	<i>Explanation</i>
	The failure of such part or assembly should result in retirement of the end item from the supply system.
X1	Repair Parts which are not procured or stocked. The requirement for such items will be filled by the next higher assembly or component.
X2	Repair Parts, Special Tools and Test Equipment which are not stocked and have no foreseen mortality. The indicated maintenance level requiring such repair parts will attempt to obtain the parts through cannibalization or salvage. The item may be requisitioned, with exception data, from the end item manager for immediate use.
G	Major assemblies that are procured with PEMA funds for initial issue only as exchange assemblies at DS and GS level. These assemblies will not be stocked above the DS and GS level or returned to depot supply level.

**NOTE**

Cannibalization or salvage may be used as a source of supply for any items source coded above except those coded X,1 and aircraft support items as restricted by AR 7042.

(2) Maintenance code indicates the lowest level of maintenance authorized to install the repair part and/or use the special tool or test equipment for each application. Capabilities of higher maintenance levels are considered equal or better. Maintenance codes are:

<i>Code</i>	<i>Explanation</i>
C	Crew/Operator
O	Organizational maintenance
F	Direct Support maintenance
H	General Support maintenance
D	Depot maintenance

(3) Recoverability code indicates whether unserviceable items should be returned for recovery or salvage. Items not coded are nonrecoverable. Recoverability codes are:

<i>Code</i>	<i>Explanation</i>
R	Repair parts, (assemblies and components), special tools and test equipment which are considered economically repairable at direct and general support maintenance levels. When the item is no longer economically repairable, it is normally disposed of at the GS level. When supply considerations dictate, some of these repair parts may be listed for automatic return to supply for depot level repair as set forth in AR 710-50. When so listed, they will be replaced by supply on an exchange basis.
S	Repair Parts, Special Tools, Test Equipment and assemblies which are economically repairable at DS and GS activities and which normally are furnished by supply on an exchange basis.

When items are determined by a G'SU to be uneconomically repairable, they will be evacuated to a depot for evaluation and analysis before final disposition.

T High dollar value recoverable repair parts, special tools and test equipment which are subject to special handling and are issued on an exchange basis. Such items will be repaired or overhauled at depot maintenance activities only. No repair may be accomplished at lower levels.

U Repair Parts, Special Tools and Test Equipment specifically selected for salvage by reclamation units because of precious metal content, critical materials, high dollar value or reusable casings or castings.

b. *Federal Stock Number.* Indicates the Federal stock number assigned to the item and will be used for .requisitioning purposes.

c. *Description.* Indicates the Federal item name and a minimum description required to identify the item. The last line indicates the reference number followed by the applicable Federal Supply Code for Manufacturer (FSCM) in parentheses. The FSCM 'is used as an element in item identification to designate manufacturer or distributor or Government agency, etc., and ,is identified in SB 70,8-42. Items that are included in kits and sets are listed below the name of the kit or set with quantity of each item in the kit or set indicated in front of the item name.

d. *Unit of Measure (U/M).* Indicates the standard or basic quantity by which the listed item is used in performing the actual maintenance function. This measure is expressed by a two-character alphabetical abbreviation, e.g., ea, in, pr, etc., and is the basis used to indicate quantities and allowances in subsequent columns.

e. *Quantity Incorporated in Unit.* This column indicates the quantity of the item used in the assembly group. A "V" appearing in this column in lieu of a quantity indicates that a definite quantity cannot be indicated (e.g., shims, spacers, etc.).

f. *Fifteen-Day Organizational Maintenance Allowances.*

(1) Items authorized for use as required but not for initial stockage are identified with an asterisk **in** the allowance column.

(2) The allowance columns are divided into four subcolumns. Indicated in each subcolumn is the total quantity of special tools authorized for the number -of equipments supported. (Not Applicable).

g. *Thirty-Day DS/GS Maintenance Allowance.*

(1) Items authorized for use as required but not for initial stockage are identified with an asterisk in the allowance column.

(2) The allowance columns are divided into three subcolumns. The quantitative allowance of

special tools for DS/IGS levels of maintenance will represent initial stockage for a 30Sday period for the number of equipments supported. (Not Applicable).

*h. One-Year Allowances Per 100 Equipment/ Contingency Planning Purposes.*

(1) Items authorized for use as required but not for initial stockage are identified with an asterisk in the allowance column.

(2) This column indicates the total quantity of special tools .required for distribution and contingency planning purposes. (Not Applicable).

*i. Depot Maintenance Allowance Per 100 Equipment.*

(1) Items authorized for use as required but not for initial stockage are identified with an asterisk in the allowance column.

(2) This column indicates the total quantity of special tools authorized for depot maintenance of ,100 equipments. (Not Applicable).

*j. Illustration.* This column is divided as follows:

(1) *Figure number.* Indicates the figure number of the illustration on which the item is shown.

(2) *Item number.* Indicates the callout number used to ,reference the item on the illustration.

#### 4. Special Information

*a.* The basis of issue for authorized special tools, test and support equipment is the number of end items of equipment ,supported and the number of maintenance personnel allocated to perform the required maintenance operations.

*b.* Parts which require manufacture or assembly of a maintenance level higher than that authorized for installation will indicate in the source column the higher maintenance level.

*c.* Repair parts kilts and gasket sets appear as the last entries in the repair parts listing for the group or assembly to which they apply.

*d.* The following publication pertains to the compressor and its components:

TM 5-4310-347-14 Operator, Organizational Direct Support and General Support Maintenance Manual

#### 5. How to Locate Repair Parts

*a.* When Federal stock number or reference number is unknown:

(1) *First.* Using the table of contents determine the assembly group with-in which the repair part belongs. This is necessary since illustrations are prepared for assembly groups, and listings -are divided into the same groups.

(2) *Second.* Find 'the illustration covering the assembly group to which the repair part belongs.

(3) *Third.* Identify the repair part on the illustration and note the illustration figure and item number of the repair part.

(4) *Fourth.* Using the Repair Parts Listing, find the assembly group to which the repair part 'belongs and locate the illustration figure and -item number noted on the illustration.

*b.* When the Federal stock number or reference number is known:

(1) *First.* Using the Index of Federal Stock Numbers and Reference Numbers find the pertinent Federal stock number or reference number. This index is in ascending FSN sequence followed by a list of -reference numbers in alpha-numeric sequence, crass-referenced to the illustration figure number and item number.

(2) *Second.* Using the Repair Parts Listing, find the assembly group of the repair part and the illustration figure number and item number referenced in the Index of Federal Stock Numbers and Reference Numbers.

#### 6. Recommendations for Maintenance Publications Improvements

You can improve this manual by calling attention to errors and by recommending improvements, using DA Form 2028 (Recommended Changes ,to Publications) or by a letter, and mailing directly to Commanding General, U.S. Army Mobility Equipment Command, ATTTN: AMSME-MPP, 4300 Goodfellow 'Boulevard, St. Louis, Mo. '63120. A -reply will be furnished directly to you.



(1) SMR CODE	(2) FEDERAL STOCK NUMBER	(3) DESCRIPTION  USABLE ON CODE	(4) UNIT OF MEAS	(5) QTY INC IN UNIT	(6) 15-DAY ORGANIZATIONAL MAINTENANCE ALW				(7) ILLUS- TRATION	
					(A)	(B)	(C)	(D)	(A) FIG. NO.	(B) ITEM NO.
					1-5	6-20	21-50	51-100		
		SECTION III. - REPAIR PARTS FOR <b>ORGANIZATIONAL MAINTENANCE</b> GROUP 01 - BELT GUARD SHELL AND BRACKETS								
P 0	5305-225-9084	SCREW, THREAD ROLLING: BELT GUARD BRACKET MTG M1459 (11568)	EA	2	*	*	*	*	1	1
X20		GUARD WITH BRACKETS, BELT Z307 (11568)	EA	1					1	2
P 0	53107744	NUT, HEXAGON: BRACKET MTG M935A (11568)	EA	3	*	*	*	*	1	3
P 0	5310-407-9566	WASHER, LOCK: BRACKET MTG Mg11A (11568)	EA	3	*	*	*	*	1	4
P 0	5310-081-4219	WASHER, FLAT: BRACKET MTG M912A (11568)	EA	3	*	*	*	*	1	5
X20		BRACKET, BELT GUARD: TOP M855 (11568)	EA	1					1	6
X20		BRACKET, BELT GUARD: LOWER M357 (11568)	EA	1					1	7
X20		BRACKET, BELT GUARD: LOWER M854 (11568)	EA	1					1	8
X20		SHELL, BELT GUARD Z307-1 (11568)	EA	1					1	9
		GROUP 02 - V BELTS, PULLEY, MOTOR RAIL, ELECTRICAL CONDUIT AND WIRING								
P 0	3030-879-4844	V BELT, MATCHED SET A66 (11568)	EA	2	*	*	*	*	2	1
P 0		SETScrew, SOCKET: PULLEY M568 (11568)	EA	1	*	*	*	*	2	2
X20		PULLEY: COMPRESSOR MOTOR M5200 (1 1568)	EA	1					2	3
X20		CONNECTOR, CONDUIT M1606 (11568)	EA	2					2	4
X20		CONDUIT, FLEXIBLE: ELECTRICAL MOTOR M607 (11568)	EA	1					2	5
X20		WIRE: ELECTRICAL M1608 (11568)	EA	2					2	6
P 0	5310-732-0558	NUT, HEXAGON: MOTOR MTG SCREW M909A (11568)	EA	4	*	*	*	*	2	7
P 0	5310-637-9541	LOCKWASHER: MOTOR MTG SCREW M914A (11568)	EA	4	*	*	*	*	2	8
P 0	5305-269-3213	SCREW, CAP, HEXAGON HEAD: MOTOR MTG M921A (11568)	EA	4	*	*	*	*	2	9
P 0	5310-732-0558	NUT, HEXAGON, RAIL MTG SCREW M909A (11568)	EA	4	*	*	*	*	2	10
P 0	5310-637-9511	LOCKWASHER, SPRING: RAIL MTG SCREW M914A (11568)	EA	4	*	*	*	*	2	11
P 0	5310-087-7493	WASHER, FLAT: RAIL MTG SCREW SE588 (11568)	EA	8	*	*	*	*	2	12
P 0	5305-269-3214	SCREW, CAP, HEXAGON HEAD: MOTOR RAIL MOUNTING M1460 (11568)	EA	4	*	*	*	*	2	13

(1) SMR CODE	(2) FEDERAL STOCK NUMBER	(3) DESCRIPTION  REF NUMBER & MFR CODE	(4) UNIT OF MEAS  USABLE ON CODE	(5) QTY INC IN UNIT	(6) 15-DAY ORGANIZATIONAL MAINTENANCE ALW				(7) ILLUS- TRATION	
					(A)	(B)	(C)	(D)	(A)	(B)
					1-5	6-20	21-50	51-100	FIG. NO.	ITEM NO.
X2		RAIL, MOTOR 146 (11 568)	EA	2					2	14
X20		CORD, EXTENSION: ELECTRICAL P361 7A (11568)	EA	1					2	15
		GROUP 03 - ELECTRICAL MOTOR								
P20 R		MOTOR, ELECTRICAL: 1740 RPM, 115-230V, 1 PH, 2 HP 1 82TCFR703AA (3 8151)	EA	1	*	*	*	*	3	
X20		KEY: SHAFT E8090-8 (38151)	EA	1					3	3
X20		BOLT, STUD: BODY ASSEMBLY MTG A601 28-155 (38151 )	EA	4					3	8
		GROUP 04 - COMPRESSOR ASSEMBLY AND COMPONENTS								
PO R	4310-430-3488	COMPRESSOR ASSEMBLY RIOB (11568)	EA	1	*	*	*	*	4	1
X20		FITTING, COMPRESSION: BREATHER TUBE Z509 (11 568)	EA	1					4	2
X0		NUT, COMPRESSION: INTERCOOLER TUBE SE5-t1 (11 568)	EA	1					4	6
X20		TUBE, INTERCOOLER RE4-12A (11568)	EA	1					4	8
P 0		VALVE, SAFETY, INTERSTAGE Z67-75 (11 568)	EA	1	*	*	*	*	4	9
X20		NUT, COMPRESSION: INTERCOOLER TUBE SE5O1. (11568)	EA	1					4	13
P 0		FITTING, COMPRESSION: PIPE ELBOW, 90 DEG Z513 (11568)	EA	2	*	*	*	*	4	16
P 0	5305_045-1988	SCREW, CAP, HEXAGON HEAD: CYLINDER MOUNTING M817 (11568)	EA	6	*	*	*	*	4	20
P0	5310899-9151	NU6HEXAGON: FLYWHEEL MTG BOLT M565 (11568)	EA	1	6	*	*	*	6	1
P 0	5305071-1776	BOLT MACHINE: FLYWHEEL MTG RE4-105 (11568)	EA	1	*	*	*	*	6	2
P 0		KEY, MACHINERY, FLYWHEEL SE5-8 (11568)	EA	1	*	*	*	*	6	3
X20		FLYWHEEL: COMNRESSOR NR7A (11568)	EA	1					6	4
P O		FITTING, COMPRESSION Z509 (11560)	EA	1	*	*	*	*	6	30
P 0	4730-228-1619	CAP PIPE M461 (11568)	EA	1	*	*	*	*	6	31
P O		NIPPLE, PIPE M492 (11568)	EA	1	*	*	*	*	6	32
P 0	5305-225-99	SCREW, CAP, HEXAGON HEAD: HAND HOLE PLATE MTG M458 (11568)	EA	6	*	*	*	*	6	36
X20		FLATE, HAND HOLE WR15A (11568)	EA	1					6	37

(1) SMR CODE	(2) FEDERAL STOCK NUMBER	(3) DESCRIPTION  USABLE ON CODE	(4) UNIT OF MEAS	(5) QTY INC IN UNIT	(6) 15-DAY ORGANIZATIONAL MAINTENANCE ALW				(7) ILLUS- TRATION	
					(A)	(B)	(C)	(D)	(A) FIG. NO.	(B) ITEM NO.
					1-5	6-20	21-50	51-100		
P O	5330-585-7546	GASKET, HAND HOLE PLATE WR31B (11568)	EA	1	*	*	*	*	6	38
P O	6680-377-4915	GAGE, OIL LEVEL: COMPRESSOR RE7-14 (11568)	EA	1	*	*	*	*	6	40
P O	4730-263-3124	PLUG, PIPE: CRANKCASE M459 (11568)	EA	1	*	*	*	*	6	41
P O		PLUG, PIPE: CRANKCASE M504 (11568)	EA	2	*	*	*	*	6	42
		GROUP 05 - MAGNETIC STARTER WITH PRESSURE SWITCH AND BRACKET								
P O	5310-761-6882	NUT, HEXAGON, STARTER MTG SCREW M939A (11568)	EA	3					8	1
P O	5310-582-5965	WASHER, LOCK, STARTER MTG SCREW M919A (11568)	EA	3	*	*	*	*	8	2
P O	5305-068-0501	SCREW, MACHINE. RONDEHEAD: STARTER NTG M929A (11568)	EA	3					8	3
		GROUP 06 - GLOBE VALVE, OUTLET TUBE, PIPING AND MOUNTING BRACKET								
P O		FITTING, COMPRESSION: OUTLET TUBE Z510 (11568)	EA	1	*	*	*	*	9	1
P O		FITTING, COMPRESSION: GLOBE VALVE, 3/8 X 1/4 IN. NPT, 90 DEG Z514 (11568)	EA	1	*	*	*	*	9	2
P O		NIPPLE, PIPE: GLOBE VALVE, 1/4 X 1 1/2 IN. LG M1016B (11568)	EA	1	*	*	*	*	9	4
X20		ELBOW, STREET: GLOBE VALVE, 1/4 IN., 90 DEG M980B (11568)	EA	1					9	5
X20		FITTING, COMPRESSION: OUTLET TUBE Z645 (11568)	EA	1					9	6
X20		TUBE, OUTLET M1570 (11568)	EA	1					9	7
P O		NUT, HEXAGON: U-BOLT MTG M9399 (11568)	EA	4	*	*	*	*	9	9
X20		U-BOLT, PIPE MTG M615 (11568)	EA	2					9	10
P O	5310-732-0558	NUT, HEXAGON BRACKET MTG SCREW M909A (11568)	EA	2	*	*	*	*	9	11
P O	5310-637-9541	LOCKWASHER, SPRING: BRACKET MTG SCREW M191A (11568)	EA	2	*	*	*	*	9	12
P O	5305-269-3213	SCREW, CAP, HEXAGON HEAD: BRACKET MTG M921A (11568)	EA	2	*	*	*	*	9	13
X20		BRACKET MOUNTING M 568 (11568)	EA	1					9	14
X20		BUSHING: AIR FILTER M1318 (11568)	EA	1					9	15
P O		NIPPLE, PIPE, DEHYDRATOR, 1/1 x 3 1/2 IN M1642 (11568)	EA	1	*	*	*	*	9	16
P O		NIPPLE, PIPE: DEHYDRATOR, 1/4 X 1 1/2 IN. M1016B (11568)	EA	*	*	*	*	*	9	17

(1) SMR CODE	(2) FEDERAL STOCK NUMBER	(3) DESCRIPTION  USABLE ON CODE	(4) UNIT OF MEAS	(5) QTY INC IN UNIT	(6) 15-DAY ORGANIZATIONAL MAINTENANCE ALW				(7) ILLUS- TRATION	
					(A)	(B)	(C)	(D)	(A) FIG. NO.	(B) ITEM NO.
					1-5	6-20	21-50	51-100		
P 0		NIPPLE, PIPE: DEHYDRATOR, 1/4 xIN. LG M933s (11568)  GROUP 07 - STRIP HEATER, THERMOSTAT AND AIR FILTER	EA	1	4	*	4	*	9	18
P 0	5310-761-6882	NUT, HEXAGON: COVER MTG M1604 (11568)	EA	4	*	*	*	*	10	1
P O	5305-071-2239	SCRLID, NACHINE ROUNDHEAD: COVER NTG M1338 (11568)	EA	4					10	2
X20		COVER, THERMOSTAT M1567 (11568)	EA	1					10	3
X20		CONNECTOR, CONDUIT: ELECTRICAL M1606 (11568)	EA	2					10	24
X20		CONDUIT, FLEXIBLE: ELECTRICAL M1605 (11568)	EA	1					10	5
P 0	5930-887-4655	THEMOSTATI HEATER B200 (84119)	EA	1	1	*	4	*	10	6
P 0	4310-87-4556	HEATER, STRIP, AIR FILTER M623 (11568)	EA	1	*1	4	4	*	10	7
P 0		FILTER, AIR 1138-4M (98963)	EA	1	4	*	*	*	4	11
X1		BAFFLE: FILTER 16-115 (98963)	EA	1					11	1
P O		ELEMENT, FILTER 85-144 (98963)	EA	1	*	*	.	*	11	2
X1		O RING 78-061 (98963)	EA	1					11	3
X1		COVER ASSEMBLY, FILTER 15-430-4 (98963)	EA	1					11	4
P O		COCK, DRAIN: FILTER 43-508 (98963)	EA	1	1	*	4	4	11	5
X1		INSERT, BOWL 06-365 (98963)	EA	1					11	6
X20		O RINGEA 78-077 (98963)	EA	1					11	7
X20		RING, RETAINING: O RING 44-028 (98963)	EA	1					11	8
X1		CLAMP, RING ASSEMBLY 15-404 (98963)	EA	1					11	9
X1		BOWL ASSEMBLY: FILTER 11-064 (98963)	EA	1					11	10
		GROUP 08 - DEHYDRATOR								
X20		DEHYDRATOR 2001-20 (98963)	EA	1					12	
P O		DEHYDRATOR 4001-2 (98963)	EA	1	*	*	*		12	
X20		RING, CLAMP 15-404 (98963)	EA	1					12	1
X20		NUT 41-065 (98963)	EA	1					12	2
X1		BOWL, PLASTIC 19-116 (98963)	EA	1					12	3

(1) SMR CODE	(2) FEDERAL STOCK NUMBER	(3) DESCRIPTION  REF NUMBER & MFR CODE	(4) USABLE ON CODE	(5) QTY INC IN UNIT	(6) 15-DAY ORGANIZATIONAL MAINTENANCE ALW				(7) ILLUS- TRATION		
					(A) 1-5	(B) 6-20	(C) 21-50	(D) 51-100	(A) FIG. NO.	(B) ITEM NO.	
P 0	6850o887-4451	DESICCANT 85-059 (98963) (SILICA GEL)		EA	1	*	*	*	*	12	4
P 0		DESICCANT 85O60 (98963) (4 AM.S (USED IN DEHYDRATOR, P/N 4001-2U (98963))		EA	1	*	*	*	*	12	5
X1		PACKING, PREFORMED 78-077 (98963)		EA	1					12	6
X1		SCREEN 85-149 (98963)		EA	1					12	7
X1		TUBE 15-435 (98963)		EA	1					12	8
XI		PACKING, PREFORMED 78-042 (98963)		EA	1					12	9
X1		SCREEN W/SUPPORT 15-4341 (98963)		EA	1					12	10
X1		PACKING, PREFORMED 78061 (98963)		EA	1					12	11
X1		COVER ASSEMBLY 06-412-2 (98963)		EA	1					12	12
		GROUP 09 - REGULATOR									
P O		REGULATOR: COMPRESSOR 2001-2 (98963)		EA	1	.	.	.	*	13	
X1		ADJUSTING SCREW ASSEMBLY 15-292 (98963)		EA	1					13	1
P O		NUT, HEXAGON: ADJUSTING SCREW 41-007 (98963)		EA	1	.	*	*	*	13	2
X1		DISK, RANGE 49-029 (98963)		EA	1					13	3
X1		SCREW, CAP: COVER MTG 45-081 (98963)		EA	6					13	4
X1		COVER: REGULATOR BODY 06-337 (98963)		EA	1					13	5
X1		DISK, SPRING 06-161 (98963)		EA	1					13	6
X1		SPRING 70-073H (98963)		EA	1					13	7
X1		DIAPHRAGM ASSEMBLY 15-238 (98963)		EA	1					13	8
X1		(COMPONENT OF KIT P/N 95-1419 (989631)) O RING 78-023 (98963)		EA	1					13	9
P 0		(COMPONENT OF KIT P/N 95-149 (989635)) PLUG, BOTTOM 06-329 (98963)		EA	1	*	*	*	*	13	10
X1		O RINGEA 78-O83 (98963)		EA	1					13	11
X1		SCREEN 85-075 (98963)		EA	1					13	12
X1		SPRING 70-053 (98963)		EA	1					13	13

(1) SMR CODE	(2) FEDERAL STOCK NUMBER	(3) DESCRIPTION  REF NUMBER & MFR CODE	(4) UNIT OF MEAS ON CODE	(5) QTY INC IN UNIT	(6) 15-DAY ORGANIZATIONAL MAINTENANCE ALW				(7) ILLUS- TRATION	
					(A)	(B)	(C)	(D)	(A)	(B)
					1-5	6-20	21-50	51-100	FIG. NO.	ITEM NO.
X1		0 RING 78-29 (98963) (COMPONENT OF KIT, P/N 95-149 (98963))	EA	1					13	14
X1		VALVE ASSMBLY 15-293 (98963) (COMPONENT OF KIT, P/N 95-149 (989633))	EA	1					13	15
X1		PLUG, PIPE 43-002 (98963)	EA	1					13	16
X1		BODY: REGULATOR 06-347-1 (98963)	EA	1					13	17
P O		KIT, REPAIR 95-149 (98963) 1-DI APHRAGM 1-0 RING 1-0 RING 1-VALVE  GROUP 10 - HOSE ASSEMBLY WITH FITTINGS	EA	1	*	*	*	*	13	
P O	4310-874-3179	HOSE ASSEMBLY W/FITTINGS Z538A (11568)	EA	1	*	*	*	*	14	
P O	4730-014-6717	COUPLING: HOSE LL2-40 (11568)	EA	1	*	*	*	*	14	1
P O		NUT, UNION LL2-39 (11568)	EA	1	*	*	*	*	14	2
X1		STEM, HOSE 6362 (53477)	EA	1					14	3
X1		FERRULE, HOSE DO (53477)	EA	1					14	4
X1		HOSE: AIR 11613 (78394)	EA	2					14	5
X1		STEM, HOSE LL2-59 (11568)	EA	1					14	6
X1		FERRULE, HOSE DD (53477)  GROUP 11 - AIR RECEIVER AND COMPONENTS	EA	1					14	7
P O		CHUCK, AIR: TIRE PRESSURE GAGE 699 (53477)	EA	*	*	*	*	*	15	1
P O		GAGE, TIRE PRESSURE P3618A (11568)	EA	1	*	*	*	*	15	2
P O	530-180-0005	SCREW, DRIVE ROUNDHEAD: PLATE HTG M835 (11568)	EA	4	*	*	*	*	15	5
X20		PLATE, IDENTIFICATION: COMPRESSOR P3625A (11568)	EA	1					15	6
P O	6685-764-7623	GAGE, PRESSURE: COMPRESSOR AIR AU2951 (61349)	EA	2	*	*	*	*	15	7
P O	4820-019-3019	SAFETY VALVE ASSEMBLY: 200 PSI Z206,200 (11568)	EA	1	*	*	*	*	15	8

(1) SMR CODE	(2) FEDERAL STOCK NUMBER	(3) DESCRIPTION  REF NUMBER & MFR CODE	(4) UNIT OF MEAS ON CODE	(5) QTY INC IN UNIT	(6) 15-DAY ORGANIZATIONAL MAINTENANCE ALW				(7) ILLUS- TRATION	
					(A)	(B)	(C)	(D)	(A) FIG. NO.	(B) ITEM NO.
					1-5	6-20	21-50	51-100		
X20		TEE, PIPE: PRESSURE GAGE MTG H1003B (11568)	EA	1					15	9
X20		NIPPLE, PIPE, PRESSURE GAGE, 1/4 x 1 1/2 IN. M1016B (11 56)	EA	1					15	10
P 0		NUT, COMPRESSION: AFTERCOOLER TUBE M1244 (11568)	EA	1	*	*	*	*	15	11
P O		VALVE, UNLOADER CHECK: AFTERCOOLER TUBE CA12 (0041 5)	EA	1	*	*	*	*	15	12
X20		BUSHING: AFTERCOOLER TUBE M950 (11568)	EA	1					15	13
P O		NUT, COMPRESSION: AFTERCOOLER TUBE M1244 (11568)	EA	1	*	*	*	*	15	14
X20		TUBE, AFTERCOOLER: COMPRESSOR M1596 (11568)	EA	1					15	15
X20		FERRULE. COMPRESSION,AFTERCOOLER TUBE M1245 (11568)	EA	1					15	16
X20		BUSHING: AFTERCOOLER TUBE M950e (11568)	EA	1					15	17
P 0		LOCKNUT, CONDUIT, HANDLE MTG M1312 (11568)	EA	1	*	*	*	*	15	18
X20		HANDLE: COMPRESSOR M620 (11568)	EA	1					15	19
P O		FITTING, COMPRESSION: PRESSURE TUBE Z499 (11568)	EA	2	*	*	*	*	15	20
X20		TUBE, PRESSUREI COMPRESSOR M1569 (11568)	EA	1					15	21
P 0	4820-849-1220	COCK, DRAINI AIR RECEIVER 1825A (92976)	EA	1	*	*	*	*	15	22
X20		AIR, RECEIVER ASSEMBLY: 30 GAL P3620C (11568)	EA	1					15	23
P O		PLUG, AIR RECEIVER M998B (11568)	EA	2					1	21
P O		PLUG, AIR RECEIVER M504 (11568)	EA	2	*	*	*	*	15	25
P 0	5310-732-0558	NUT, HEXAGON: CASTER MTG SCREW M909A (11568)	EA	16	*	*	*	*	15	26
P 0	5310-637;9511	LOCKWASHER, CASTER MTG SCREW M914A (11568)	EA	16	*	*	*	*	15	27
P 0	5305-269-3211	SCREW, CAP, HEXAGON HEAD CASTER MTG P72 (11568)	EA	16	*	*	*	*	15	28
X20		CASTER, STATIONARY: AIR RECEIVER 12DH06201R (96266)	EA	2					15	29
P O		FITTING, LUBRICATION: CASTER	EA	6	*	*	*	*	15	30
X20		CASTERS, SWIVEL: AIR RECEIVER 12DH06201 (96266)	EA	2					15	31

(1) SMR CODE	(2) FEDERAL STOCK NUMBER	(3) DESCRIPTION  REF NUMBER & MFR CODE	(4) UNIT OF MEAS ON CODE	(5) QTY INC IN UNIT	(6) 15-DAY ORGANIZATIONAL MAINTENANCE ALW				(7) ILLUS- TRATION	
					(A)	(B)	(C)	(D)	(A)	(B)
					1-5	6-20	21-50	51-100	FIG. NO.	ITEM NO.
		SECTION V. - REPAIR PARTS FOR DS, CS AND DEPOT MAINTENANCE GROUP 01 - BELT GUARD SHELL AND BRACKETS								
P 0	5305.225-9084	SCREW, THREAD ROLLING: BELT GUARD BRACKET MTG M1459 (11568)	EA	2	*	*	*	*	1	1
X20		GUARD WITH BRACKETS, BELT Z307 (11568)	EA	1					1	2
P 0	5310-880-7744	NUT, HEXAGON: BRACKET MTG M935A (11568)	EA	3	*	*	*	*	1	3
P 0	5310-407-9566	WASHER, LOCK: BRACKET MTG M911A (11568)	EA	3	*	*	*	*	1	4
P 0	5310-081-4219	WASHER, FLAT: BRACKET MTG M912A (11568)	EA	3	**	*	*	*	1	5
X20		BRACKET, BELT GUARD: TOP M355 (11568)	EA	1					1	6
X20		BRACKET, BELT GUARD: LOWER MB57 (11568)	EA	1					1	7
X20		BRACKET, BELT GUARD: LOWER M854 (11568)	EA	1					1	8
X20		SHELL, BELT GUARD Z307-1 (11568)	EA	1					1	9
		GROUP 02 - V BELTS, PULLEY, MOTOR RAIL, ELECTRICAL CONDUIT AND WIRING								
P 0	3030-879-4844	V, BELT, MATCHED SET A66 (11568)	EA	2	*	*	*	*	2	1
P 0		SETSCREW, SOCKET: PULLEY M568 (11568)	EA	1	*	*	*	*	2	2
X20		PULLEY: COMPRESSOR OTR M520D0 (11568)	EA	1					2	3
X20		CONNECTORS, CONDUIT M1606 (11568)	EA	2					2	4
X20		CONDUIT, FLEXIBLE: ELECTRICAL MOTOR M1607 (11568)	EA	1					2	5
X20		WIRE, ELECTRICAL M1608 (01568)	EA	2					2	6
P 0	5310-732-0558	NUT, HEXAGON: MOTOR MTG SCREW M909A (1 568)	EA	4	*	*	*	*	2	7
P 0	5310-637-9541	LOCKWASHER, MOTOR MTG SCREW M914A (11568)	EA	4	*	*	*	*	2	8
P 0	5305-269-3213	SCREW, CAP, HEXAGON HEAD: MOTOR MTG M921A (11568)	EA	4	*	*	*	*	2	9
P 0	5310-732-0558	NUT, HEXAGON: RAIL MTG SCREW M90CA (11568)	EA	4	*	*	*	*	2	10
P 0	5310-637-9541	LOCKWASHER, SPRING: RAIL MTG SCREW M91A (11568)	EA	4	*	*	*	*	2	11
P 0	5310-087-71493	WASHER, FLAT: RAIL MTG SCREW SE588 (11568)	EA	8	*	*	*	*	2	12
P 0	5305-269-3214	SCREW, CAP, HEXAGON HEAD MOTOR RAIL MOUNTING M1460 (11568)	EA	4	*	*	*	*	2	13



(1) SMR CODE	(2) FEDERAL STOCK NUMBER	(3) DESCRIPTION  REF NUMBER & MFR CODE	(4) USABLE ON CODE	(5) UNIT OF MEAS	(6) 30-DAY DS MAINT ALLOWANCE	(7) 30-DAY GS MAINT ALLOWANCE			(8) 1-YR ALW PER 100 EQUIP CNTGY	(9) DEPOT MAINT ALW PER 100 EQUIP	(10) ILLUS- TRATION				
						(a)	(b)	(c)			(a)	(b)	(c)	(a)	(b)
						1-20	21-50	51-100			1-20	21-50	51-100	FIG. NO.	ITEM NO.
X20		RAIL, MOTOR M146 (11568)		EA	2							2	14		
X20		CORD, EXTENSION; ELECTRICAL P3617A (11568)		EA	1							2	15		
		GROUP 03 - ELECTRICAL MOTOR													
P20 R		MOTOR, ELECTRICAL; 1740 RPM, 115-230V, 1 PH, 2 HP 182TCFR7043AA (38151)		EA	1	*	*	*	*	*	*	3			
P F		SCREW, CAP, HEXAGON HEAD; FAN COVER MTG E7531-37S (38151)		EA	4	*	*	*	*	*	*	3	1		
X2F		COVER, FAN C64153C (38151)		EA	1							3	2		
X20		KEY; SHAFT E8090-8 (38151)		EA	1							3	3		
X2F		FAN, EXTERNAL AA64152A1A (38151)		EA	1							3	4		
P F		NUT, HEXAGON; FAN MTG SCREW A7551-18S (38151)		EA	2	*	*	*	*	*	*	3	5		
P F		LOCKWASHER; FAN MTG SCREW E7653-2S (38151)		EA	2	*	*	*	*	*	*	3	6		
P F		SCREW, CAP, HEXAGON HEAD; FAN MOUNTING E7520-125S (38151)		EA	2	*	*	*	*	*	*	3	7		
X20		BOLT, STUD; BODY ASSEMBLY MTG A60128-15S (38151)		EA	4							3	8		
P F		NUT, HEXAGON; BRACKET MTG A7551-9S (38151)		EA	8	*	*	*	*	*	*	3	9		
X2F		PLUG; BRACKET MTG E4850-1 (38151)		EA	2							3	10		
X2F		BRACKET, FRONT; MOTOR A64011AC (38151)		EA	1							3	11		
X2F		SLINGER, EXTERNAL A7964-1 (38151)		EA	1							3	12		
P F	5310-887-4598	SPRING, LOADING A7661-17 (38151)		EA	1	*	*	*	*	*	*	3	13		
P F	3110-516-5551	BEARING; SHAFT A7848-17 (38151)		EA	1	*	*	*	*	*	*	3	14		
X2F		BRACKET, REAR; MOTOR A64145AC (38151)		EA	1							3	15		
X2F		SLINGER, EXTERNAL A64285-2 (38151)		EA	1							3	16		
P F		BEARING; SHAFT A7848-30 (38151)		EA	1	*	*	*	*	*	*	3	17		
X2F		CONDUIT BOX ASSEMBLY AA64536C (38151)		EA	1							3	18		
P F		SCREW, CAP, HEXAGON HEAD; COVER MTG E7545-25S (38151)		EA	4	*	*	*	*	*	*	3	19		
X2F		COVER; CONDUIT BOX A64537C (38151)		EA	1							3	20		
X2F		GASKET; COVER E61823-1 (38151)		EA	1							3	21		

(1) SMR CODE	(2) FEDERAL STOCK NUMBER	(3) DESCRIPTION  REF NUMBER & MFR CODE	(4) USABLE ON CODE  UNIT OF MEAS	(5) QTY INC IN UNIT	(6) 30-DAY DS MAINT ALLOWANCE			(7) 30-DAY GS MAINT ALLOWANCE			(8) 1-YR ALW PER 100 EQUIP CNTGY	(9) DEPOT MAINT ALW PER 100 EQUIP	(10) ILLUS- TRATION		
					(a)	(b)	(c)	(a)	(b)	(c)			(a)	(b)	
					1-20	21-50	51-100	1-20	21-50	51-100			FIG. NO.	ITEM NO.	
P F		SCREW, CAP, ROUNHEAD: BASE MTG E7531-375 (38151)	EA	2	*	*	*	*	*	*	*	*	3	22	
X2F		BASE: CONDUIT BOX C64536A (38151)	EA	1									3	23	
P F		CAPACITOR A64199-600 (38151)	EA	2	*	*	*	*	*	*	*	*	3	24	
X1		BODY ASSEMBLY AAB63723-10 (38151)	EA	1									3	25	
X2F		FAN A64661AA (38151)	EA	1									3	26	
X2F		STATOR WEDGE KIT HCL8467-4 (38151)	EA	1									3	27	
P F		SWITCH, STATOR AS61061-14 (38151)	EA	1	*	*	*	*	*	*	*	*	3	28	
X2F		DEVICE, CENTERING AS61046-5 (38151)	EA	1									3	29	
X2F		ROTOR ASSEMBLY ABL84E35C1 (38151)	EA	1									3	30	
X2F		SHAFT A64380-675 (38151)	EA	1									3	31	
		GROUP 04 - COMPRESSOR ASSEMBLY AND COMPONENTS													
P20 R	4310-430-3488	COMPRESSOR ASSEMBLY R10B (11568)	EA	1	*	*	*	*	*	*	*	*	*	4	1
X20		FITTING, COMPRESSION: BREATHER TUBE Z509 (11568)	EA	1										4	2
X2F		TUBE, BREATHER UB375 (11568)	EA	1										4	3
P F		SETSCREW, SLOTTED: MUFFLER MTG M432 (11568)	EA	1	*	*	*	*	*	*	*	*	*	4	4
P F	4310-450-9213	MUFFLER ASSEMBLY, INTAKE Z65A (11568)	EA	1	*	*	*	*	*	*	*	*	*	4	5
X20		NUT, COMPRESSION: INTERCOOLER TUBE SE5-41 (11568)	EA	1										4	6
P F	4730-851-6259	FERRULE, COMPRESSION: INTERCOOLER TUBE SE5-42 (11568)	EA	1	*	*	*	*	*	*	*	*	*	4	7
X20		TUBE, INTERCOOLER RE4-12A (11568)	EA	1										4	8
P O		VALVE, SAFETY, INTERSTAGE Z67-75 (11568)	EA	1	*	*	*	*	*	*	*	*	*	4	9
P F	5305-269-3215	SCREW, CAP, HEXAGON HEAD: INTAKE MANIFOLD MTG M944A (11568)	EA	4	*	*	*	*	*	*	*	*	*	4	10
X2F		MANIFOLD, INTAKE R10B2 (11568)	EA	1										4	11
X2F		MANIFOLD, INTAKE SE5-2C (11568)	EA	1										4	12
X20		NUT, COMPRESSION: INTERCOOLER TUBE SE5-41 (11568)	EA	1										4	13
P F	4730-851-6259	FERRULE, COMPRESSION: INTERCOOLER TUBE SE5-42 (11568)	EA	1	*	*	*	*	*	*	*	*	*	4	14

(1) SMR CODE	(2) FEDERAL STOCK NUMBER	(3) DESCRIPTION  REF NUMBER & MFR CODE	(4) USABLE ON CODE	(5) UNIT OF MEAS	(6) 30-DAY DS MAINT ALLOWANCE	(7) 30-DAY GS MAINT ALLOWANCE	(8) 1-YR ALW PER 100 EQUIP CNTGY	(9) DEPOT MAINT ALW PER 100 EQUIP	(10) ILLUS- TRATION							
									(6)			(7)			(a)	(b)
									(a)	(b)	(c)	(a)	(b)	(c)	FIG. NO.	ITEM NO.
X2F		TUBE, UNLOADER SB250A (11568)		EA	1					4	15					
P O		FITTING, COMPRESSION; PIPE ELBOW, 90 DEG Z513 (11568)		EA	2	*	*	*	*	4	16					
P F	5305-269-3215	SCREW, CAP, HEXAGON HEAD; EXHAUST MANIFOLD MTG M944A (11568)		EA	4	*	*	*	*	4	17					
X2F		MANIFOLD, EXHAUST RE10-2E (11568)		EA	1					4	18					
X2F		MANIFOLD, EXHAUST WR2B (11568)		EA	1					4	19					
P O	5305-045-1988	SCREW, CAP, HEXAGON HEAD; CYLINDER MOUNTING M817 (11568)		EA	6	*	*	*	*	4	20					
P F	5330-450-4130	GASKET, CYLINDER FLANGE WR29A (11568)		EA	1	*	*	*	*	4	21					
X2F		CYLINDER; COMPRESSOR WR14-6A (11568)		EA	1					4	22					
P F	4310-631-3399	VALVE ASSEMBLY, INTAKE Z118 (11568)		EA	1	*	*	*	*	5	1					
P F		SCREW, W/LOCKWASHER, MACHINE; INTAKE VALVE RE14-81 (11568)		EA	1	*	*	*	*	5	2					
P F	4310-625-6760	SEAT, INTAKE VALVE RE14-71A (11568)		EA	1	*	*	*	*	5	3					
P F	5310-625-6761	DISC, VALVE RE14-70 (11568)		EA	1	*	*	*	*	5	4					
P F	4310-616-4374	SPRING, VALVE RE14-58 (11568)		EA	1	*	*	*	*	5	5					
X2F		CAGE, INTAKE VALVE RE14-72 (11568)		EA	1					5	6					
P F	5330-584-8999	GASKET, VALVE RE14-75A (11568)		EA	1	*	*	*	*	5	7					
P F	4310-631-3398	VALVE ASSEMBLY, EXHAUST Z117 (11568)		EA	1	*	*	*	*	5	8					
P F	5330-584-9011	GASKET, VALVE RE10-63A (11568)		EA	1	*	*	*	*	5	9					
P F	5305-957-7824	SCREW, W/LOCKWASHER, MACHINE; EXHAUST VALVE RE7-81 (11568)		EA	1	*	*	*	*	5	10					
X2F		CAGE, EXHAUST VALVE RE10-51A (11568)		EA	1					5	11					
P F	4310-619-0215	SPRING, VALVE RE10-59 (11568)		EA	1	*	*	*	*	5	12					
P F	5310-625-6758	DISC, VALVE RE10-61 (11568)		EA	1	*	*	*	*	5	13					
X1		SEAT, EXHAUST VALVE RE10-65A (11568)		EA	1					5	14					
P F	5330-584-9011	GASKET, VALVE RE10-63A (11568)		EA	1	*	*	*	*	5	15					
P F	4310-631-3397	VALVE ASSEMBLY, INTAKE Z113 (11568)		EA	1	*	*	*	*	5	16					
P F	5330-599-5888	GASKET, VALVE SE5-28A (11568)		EA	1	*	*	*	*	5	17					

(1) SHR CODE	(2) FEDERAL STOCK NUMBER	(3) DESCRIPTION  REF NUMBER & MFR CODE	(4) USABLE ON CODE	(5) UNIT OF MEAS	(6) 30-DAY DS MAINT ALLOWANCE	(7) 30-DAY GS MAINT ALLOWANCE			(8) 1-YR ALW PER 100 EQUIP CNTGY	(9) DEPOT MAINT ALW PER 100 EQUIP	(10) ILLUS- TRATION				
						(a)	(b)	(c)			(a)	(b)	(c)	(a)	(b)
						1-20	21-50	51-100			1-20	21-50	51-100	FIG. NO.	ITEM NO.
P F	5305-957-7824	SCREW, W/LOCKWASHER, MACHINE; INTAKE VALVE RE7-81 (11568)		EA	1	*	*	*	*	*	*	5	18		
P F	4310-625-6754	SEAT, INTAKE VALVE RE7-56A (11568)		EA	1	*	*	*	*	*	*	5	19		
P F	5310-625-6755	DISC, VALVE RE10-62 (11568)		EA	1	*	*	*	*	*	*	5	20		
P F	4310-616-4372	SPRING, VALVE RE7-60 (11568)		EA	1	*	*	*	*	*	*	5	21		
X2F		CAGE, INTAKE VALVE RE7-52A (11568)		EA	1							5	22		
P F	5330-599-5888	GASKET, VALVE SE5-28A (11568)		EA	1	*	*	*	*	*	*	5	23		
P F	4310-631-3396	VALVE ASSEMBLY, EXHAUST Z115 (11568)		EA	1	*	*	*	*	*	*	5	24		
P F	5330-599-5888	GASKET, VALVE SE5-28A (11568)		EA	2	*	*	*	*	*	*	5	25		
P F	5305-957-7824	SCREW, W/LOCKWASHER, MACHINE; EXHAUST VALVE RE7-81 (11568)		EA	1	*	*	*	*	*	*	5	26		
X2F		CAGE, EXHAUST VALVE RE7-53A (11568)		EA	1							5	27		
P F	4310-616-4372	SPRING, VALVE RE7-60 (11568)		EA	1	*	*	*	*	*	*	5	28		
P F		DISC, VALVE RE10-62 (11568)		EA	1	*	*	*	*	*	*	5	29		
P F	4310-625-6752	SEAT, EXHAUST RE7-57A (11568)		EA	1	*	*	*	*	*	*	5	30		
P F	5330-599-5888	GASKET, VALVE SE5-28A (11568)		EA	1	*	*	*	*	*	*	5	31		
P O	5310-899-9151	NUT, HEXAGON; FLYWHEEL MTG BOLT M465 (11568)		EA	1	*	*	*	*	*	*	6	1		
P O	5305-071-1776	BOLT, MACHINE; FLYWHEEL MTG RE4-105 (11568)		EA	1	*	*	*	*	*	*	6	2		
P O		KEY, MACHINERY; FLYWHEEL SE5-8 (11568)		EA	1	*	*	*	*	*	*	6	3		
X20		FLYWHEEL; COMPRESSOR NR7A (11568)		EA	1							6	4		
P F	5330-724-0793	SEAL, OIL; CRANKCASE Z121120 (80201)		EA	1	*	*	*	*	*	*	6	5		
P F	5305-207-1798	SCREW, MACHINE; GOVERNOR HOUSING COVER MTG SE14-84 (11568)		EA	6	*	*	*	*	*	*	6	6		
X2F		COVER, GOVERNOR HOUSING RE10-100A (11568)		EA	1							6	7		
P F	4310-585-4283	GASKET, GOVERNOR COVER SE14-89 (11568)		EA	1	*	*	*	*	*	*	6	8		
P F	4310-013-7320	KIT, RELEASE VALVE ASSEMBLY Z124-14A (11568)		EA	1	*	*	*	*	*	*	6	9		
P F	4310-625-6747	PLUNGER, RELEASE VALVE SE5-86B (11568)		EA	1	*	*	*	*	*	*	6	10		
X1		BODY, RELEASE VALVE NR101 (11568)		EA	1							6	11		
P F	4310-616-4373	SPRING, RELEASE VALVE SE5-91 (11568)		EA	1	*	*	*	*	*	*	6	12		

(1) SMR CODE	(2) FEDERAL STOCK NUMBER	(3) DESCRIPTION  REF NUMBER & MFR CODE	(4) USABLE ON CODE	(5) UNIT OF MEAS	(6) QTY INC IN UNIT	(6) 30-DAY DS MAINT ALLOWANCE			(7) 30-DAY GS MAINT ALLOWANCE			(8) 1-YR ALW PER 100 EQUIP CNTGY	(9) DEPOT MAINT ALW PER 100 EQUIP	(10) ILLUS- TRATION	
						(a)	(b)	(c)	(a)	(b)	(c)			(a)	(b)
						1-20	21-50	51-100	1-20	21-50	51-100			FIG. NO.	ITEM NO.
P F	3110-100-6212	BALL, RELEASE VALVE SE5-95 (11568)		EA	1	*	*	*	*	*	*	*	*	6	13
P F	4310-896-5984	MUFFLER ASSEMBLY, UNLOADER Z60A (11568)		EA	1	*	*	*	*	*	*	*	*	6	14
X1		BODY, UNLOADER MUFFLER M1046 (11568)		EA	1									6	15
X1		FELT M98A (11568)		EA	1									6	16
X1		SCREEN M97A (11568)		EA	1									6	17
P F	5315-846-4881	PIN, GOVERNOR WEIGHT 215312-1625 (06145)		EA	2	*	*	*	*	*	*	*	*	6	18
P F	4310-896-2105	WEIGHT, GOVERNOR SE5-82 (11568)		EA	2	*	*	*	*	*	*	*	*	6	19
P F	4310-884-4582	SLEEVE, SPRING SE5-87 (11568)		EA	1	*	*	*	*	*	*	*	*	6	20
P F	4310-850-5541	SPRING, GOVERNOR MAIN SE5-90 (11568)		EA	1	*	*	*	*	*	*	*	*	6	21
P F	5310-087-7493	WASHER, FLAT; MAIN SPRING SE5-88 (11568)		EA	1	*	*	*	*	*	*	*	*	6	22
P F	5305-710-4190	SCREW, CAP, HEXAGON HEAD: SPINDLE MOUNTING SE5-94 (11568)		EA	1	*	*	*	*	*	*	*	*	6	23
P F	5310-209-0965	LOCKWASHER, SPRING: MTG SCREW M466 (11568)		EA	1	*	*	*	*	*	*	*	*	6	24
P F	2990-863-0926	SPINDLE, GOVERNOR SE5-83B (11568)		EA	1	*	*	*	*	*	*	*	*	6	25
X2F		PLATE, BAFFLE NR104 (11568)		EA	1									6	26
P F	5305-269-3211	SCREW, CAP, HEXAGON HEAD: GOVERNOR HOUSING MTG M472 (11568)		EA	4	*	*	*	*	*	*	*	*	6	27
X2F		HOUSING, GOVERNOR NR80A (11568)		EA	1									6	28
X1		GASKET, GOVERNOR HOUSING SE14-30 (11568) (COMPONENT OF SET, FSN 4310-957-5652)		EA	1									6	29
X1		GASKET, GOVERNOR HOUSING SE14-30A (11568) (COMPONENT OF SET, FSN 4310-957-5652)		EA	1									6	29
X1		GASKET, GOVERNOR HOUSING SE14-30C (11568) (COMPONENT OF SET, FSN 4310-957-5652)		EA	1									6	29
X1		GASKET, GOVERNOR HOUSING SE14-30B (11568) (COMPONENT OF SET, FSN 4310-957-5652)		EA	1									6	29
P O		FITTING, COMPRESSION Z509 (11568)		EA	1	*	*	*	*	*	*	*	*	6	30
P O	4730-228-1619	CAP, PIPE M461 (11568)		EA	1	*	*	*	*	*	*	*	*	6	31
P O		NIPPLE, PIPE M492 (11568)		EA	1	*	*	*	*	*	*	*	*	6	32

(1) SMR CODE	(2) FEDERAL STOCK NUMBER	(3) DESCRIPTION  REF NUMBER & MFR CODE	(4) USABLE ON CODE	(5) UNIT OF MEAS	(6) 30-DAY DS MAINT ALLOWANCE	(7) 30-DAY GS MAINT ALLOWANCE			(8) 1-YR ALW PER 100 EQUIP CNTGY	(9) DEPOT MAINT ALW PER 100 EQUIP	(10) ILLUS- TRATION				
						(a)	(b)	(c)			(a)	(b)	(c)	(a)	(b)
						1-20	21-50	51-100			1-20	21-50	51-100	FIG. NO.	ITEM NO.
P F	5310-732-0558	NUT, HEXAGON; CRANKCASE MTG SCREW M909A (11568)		EA	4	*	*	*	*	*	*	*	6	33	
P F	5310-637-9541	WASHER, LOCK; CRANKCASE MTG SCREW M914A (11568)		EA	4	*	*	*	*	*	*	*	6	34	
P F	5305-269-3214	SCREW, CAP, HEXAGON HEAD; COMPRESSOR CRANKCASE MTG M1460 (11568)		EA	4	*	*	*	*	*	*	*	6	35	
P O	5305-225-8499	SCREW, CAP, HEXAGON HEAD; HAND HOLE PLATE MTG M458 (11568)		EA	6	*	*	*	*	*	*	*	6	36	
X20		PLATE, HAND HOLE WR15A (11568)		EA	1								6	37	
P O	5330-585-7546	GASKET, HAND HOLE PLATE WR31B (11568)		EA	1	*	*	*	*	*	*	*	6	38	
X2F		CRANKCASE; COMPRESSOR WR9A (11568)		EA	1								6	39	
P O	6680-377-4915	GAGE, OIL LEVEL; COMPRESSOR RE7-14 (11568)		EA	1	*	*	*	*	*	*	*	6	40	
P O	4730-263-3124	PLUG, PIPE; CRANKCASE M459 (11568)		EA	1	*	*	*	*	*	*	*	6	41	
P O		PLUG, PIPE; CRANKCASE M504 (11568)		EA	2	*	*	*	*	*	*	*	6	42	
X1		BOLT, CONNECTING ROD R10-20 (11568) (COMPONENT OF KIT, P/N ZR10-3 (11568))		EA	2								7	1	
X1		DIPPER, OIL R30-24 (11568) (COMPONENT OF KIT, P/N ZR10-3 (11568))		EA	1								7	2	
X1		RING, PISTON PIN R10-102 (11568) (COMPONENT OF KIT, P/N ZR15-4 (11568))		EA	2								7	3	
X1		PIN, PISTON R10-21 (11568) (COMPONENT OF KIT, P/N ZR15-4 (11568))		EA	1								7	4	
X1		BEARING, PISTON PIN R10-37 (11568)		EA	1								7	5	
X1		ROD, CONNECTING R10-3A (11568) (COMPONENT OF KIT, P/N ZR10-3 (11568))		EA	1								7	6	
P F	4310-773-7986	RING SET, LOW PRESSURE PISTON Z179C (11568)		EA	1	*	*	*	*	*	*	*	7	7	
X1		PISTON, LOW PRESSURE R15-4 (11568) (COMPONENT OF KIT, P/N ZR15-4 (11568))		EA	1								7	8	
X1		BOLT, CONNECTING ROD R10-20 (11568) (COMPONENT OF KIT, P/N ZR10-3A (11568))		EA	2								7	9	
X1		DIPPER, OIL R10-24 (11568) (COMPONENT OF KIT, P/N ZR10-3A (11568))		EA	1								7	10	

(1) SMR CODE	(2) FEDERAL STOCK NUMBER	(3) DESCRIPTION  REF NUMBER & MFR CODE	(4) USABLE ON CODE	(5) UNIT OF MEAS	(9) QTY INC IN UNIT	(6) 30-DAY DS MAINT ALLOWANCE			(7) 30-DAY GS MAINT ALLOWANCE			(8) 1-YR ALW PER 100 EQUIP CNTGY	(9) DEPOT MAINT ALW PER 100 EQUIP	(10) ILLUS- TRATION	
						(a)	(b)	(c)	(a)	(b)	(c)			(a)	(b)
						1-20	21-50	51-100	1-20	21-50	51-100			FIG. NO.	ITEM NO.
X1		RING, PISTON PIN RETAINING R10-102 (11568) (COMPONENT OF KIT, P/N ZR10-4 (11568))		EA	2									7	11
X1		PIN, PISTON R10-21 (11568) (COMPONENT OF KIT, P/N ZR10-4 (11568))		EA	1									7	12
X1		BEARING, PISTON PIN R10-37 (11568) (COMPONENT OF KIT, P/N ZR10-3A (11568))		EA	1									7	13
X1		ROD, CONNECTING R15-3 (11568) (COMPONENT OF KIT, P/N ZR10-3A (11568))		EA	1									7	14
P F	4310-477-9775	RING SET, HIGH PRESSURE PISTON Z189c (11568)		EA	1	*	*	*	*	*	*	*	*	7	15
X1		PISTON, HIGH PRESSURE R10-4 (11568) (COMPONENT OF KIT, P/N ZR10-4 (11568))		EA	1									7	16
X		BEARING ASSEMBLY, MAIN ZNR16 (11568)		EA	1									7	17
P F	3110-100-0516	CUP, MAIN BEARING 14276 (60038)		EA	2	*	*	*	*	*	*	*	*	7	18
P F	3110-100-3150	CONE AND ROLLER, MAIN BEARING. 14138A (60038)		EA	2	*	*	*	*	*	*	*	*	7	19
X2F		CRANKSHAFT R10-5 (11568)		EA	1									7	20
P F		KIT, COMPLETE VALVE SET WITH GASKETS Z102 (11568)		EA	1	*	*	*	*	*	*	*	*	5	
P F	4310-875-4107	KIT, COMPLETE VALVE GASKET SET Z102G (11568)		EA	1	*	*	*	*	*	*	*	*	5	
P F	4310-957-5652	GASKET SET, GOVERNOR HOUSING Z130 (11568)		EA	1	*	*	*	*	*	*	*	*	6	
		4-GASKET													
X2F		KIT, RING SET, COMPLETE PUMP ZR15 (11568)		EA	1									7	
P F		KIT, CONNECTING ROD ASSEMBLY ZR10-3 (11568)		EA	1	*	*	*	*	*	*	*	*	7	
		2-BOLT													
		1-DIPPER													
		1-BEARING													
		1-ROD													
P F	4310-413-4021	KIT, PISTON ASSEMBLY ZR15-4 (11568)		EA	1	*	*	*	*	*	*	*	*	7	
		2-RING												7	3
		1-PIN												7	4
		1-PISTON												7	8

(1) SMR CODE	(2) FEDERAL STOCK NUMBER	(3) DESCRIPTION  REF NUMBER & MFR CODE	(4) USABLE ON CODE	(5) UNIT OF MEAS	(6) 30-DAY DS MAINT ALLOWANCE	(7) 30-DAY GS MAINT ALLOWANCE			(8) 1-YR ALW PER 100 EQUIP CNTGY	(9) DEPOT MAINT ALW PER 100 EQUIP	(10) ILLUS- TRATION				
						(a)	(b)	(c)			(a)	(b)	(c)	(a)	(b)
						1-20	21-50	51-100			1-20	21-50	51-100	FIG. NO.	ITEM NO.
P F		KIT, CONNECTING ROD ASSEMBLY ZR10-3A (11568)		EA	1	*	*	*	*	*	*	7			
		2-BOLT										7	9		
		1-DIPPER										7	10		
		1-BEARING										7	13		
		1-ROD										7	14		
P F	4310-413-4020	KIT, PISTON ASSEMBLY, HIGH PRESSURE ZR10-4 (11568)		EA	1	*	*	*	*	*	*	7			
		2-RING										7	11		
		1-PIN										7	12		
		1-PISTON										7	16		
		GROUP 05 - MAGNETIC STARTER WITH PRESSURE SWITCH AND BRACKET													
P O	5310-761-6882	NUT, HEXAGON; STARTER MTG SCREW M939A (11568)		EA	3	*	*	*	*	*	*	8	1		
P O	5310-582-5965	WASHER, LOCK; STARTER MTG SCREW M919A (11568)		EA	3	*	*	*	*	*	*	8	2		
P O	5305-068-0501	SCREW, MACHINE, ROUNDHEAD; STARTER MTG M929A (11568)		EA	3	*	*	*	*	*	*	8	3		
P F	5310-732-0558	NUT, HEXAGON; BRACKET MTG SCREW M909A (11568)		EA	2	*	*	*	*	*	*	8	4		
P F	5310-637-9341	LOCKWASHER, SPRING; BRACKET MTG SCREW M914A (11568)		EA	2	*	*	*	*	*	*	8	5		
P F	5310-087-7493	WASHER, FLAT; BRACKET MTG SCREW SE5-88 (11568)		EA	2	*	*	*	*	*	*	8	6		
P F	5305-269-9511	SCREW, CAP, HEXAGON HEAD; BRACKET MTG M472 (11568)		EA	2	*	*	*	*	*	*	8	7		
X2F		BRACKET, STARTER MOUNTING M1573 (11568)		EA	1							8	8		
P2F R		STARTER, MAGNETIC; W/PRESSURE SWITCH 82DA14EHA1 (23826)		EA	1	*	*	*	*	*	*	8	9		
X1		STARTER, MAGNETIC 14DA (23826)		EA	1							8	10		
P F		KIT, HANDOFF AUTO SELECTOR SWITCH 508B9488 (23826)		EA	1	*	*	*	*	*	*	8	11		
P F		COIL, HEATER RELAY H34 (23826)		EA	1	*	*	*	*	*	*	8	12		
P F	4540-838-3539	COIL, HEATER RELAY H41 (23826)		EA	1	*	*	*	*	*	*	8	12		
X1		THERMAL OVERLOAD ASSEMBLY 48DB11A (23826)		EA	1							8	13		
X1		COIL D2936-31 (23826)		EA	1							8	14		
X1		MAGNET AND ARMATURE ASSEMBLY D16577-1 (23826)		EA	1							8	15		
X1		CROSS ARM ASSEMBLY W/CONTACTS D50937-10 (23826)		EA	1							8	16		
X1		ARM CROSS D50876-1 (23826)		EA	1							8	17		



(1) SMR CODE	(2) FEDERAL STOCK NUMBER	(3) DESCRIPTION  USABLE ON CODE  REF NUMBER & MFR CODE	(4) UNIT OF MEAS	(5) QTY INC IN UNIT	(6) 30-DAY DS MAINT ALLOWANCE			(7) 30-DAY GS MAINT ALLOWANCE			(8) 1-YR ALW PER 100 EQUIP CNTGY	(9) DEPOT MAINT ALW PER 100 EQUIP	(10) ILLUS- TRATION	
					(a)	(b)	(c)	(a)	(b)	(c)			(a)	(b)
					1-20	21-50	51-100	1-20	21-50	51-100			FIG. NO.	ITEM NO.
X1		POLE, POWER 75DA14 (23826)	EA	1									8	18
X1		POLE, ELECTRICAL INTERNAL 75CA14 (23826)	EA	1									8	19
X1		CONTACT BOARD ASSEMBLY W/CONTACTS D50912-13 (23826)	EA	1									8	20
X1		CONTACT BOARD W/TERMINALS D50912-50 (23826)	EA	1									8	21
X1		SWITCH, PRESSURE 69HAH (23826)	EA	1									8	22
X1		FRAME, W/KNIFE EDGE BEARINGS D9078-1 (23826)	EA	1									8	23
X1		LEVER D1366-1 (23826)	EA	1									8	24
P F		TOGGLE; FOR SWITCHES W/O UNLOADERS D317-3 (23826)	EA	1	*	*	*	*	*	*	*	*	8	25
P F	5930-756-9452	SPRING, TOGGLE D357-1 (23826)	EA	1	*	*	*	*	*	*	*	*	8	26
X1		BAR, TOP D9935-1 (23826)	EA	1									8	27
P F	6110-820-0708	EQUALIZER, SPRING D276-1 (23826)	EA	1	*	*	*	*	*	*	*	*	8	28
X1		DIFFERENTIAL, SCREW AND NUT D9096-1 (23826)	EA	1									8	29
X1		SCREW, PRESSURE ADJUSTING D323-1 (23826)	EA	1									8	30
P F	5340-805-0825	SPRING, MAIN D10037-1 (23826)	EA	1	*	*	*	*	*	*	*	*	8	31
X1		PLATE, DIAPHRAGM W/STIRRUP D10456-1 (23826)	EA	1									8	32
X1		SHIELD D9680-1 (23826)	EA	1									8	33
X1		CONTACT BOARD ASSEMBLY D1673-1 (23826)	EA	1									8	34
X1		COVER, ENCLOSURE D9943-10 (23826)	EA	1									8	35
X1		ENCLOSURE, DIAPHRAGM D9271-15 (23826)	EA	1									8	36
X1		DIAPHRAGM, NEOPRENE D274-1 (23826) (COMPONENT OF KIT, P/N 75HA69 (23826))	EA	1									8	37
X1		SPRING, CONICAL D467-1 (23826)	EA	1									8	38
P F	5930-521-8471	KIT PARTS 75HA69 (23826) 1-DIAPHRAGM	EA	1	*	*	*	*	*	*	*	*	8	
		GROUP 06 - GLOBE VALVE, OUTLET TUBE, PIPING AND MOUNTING BRACKET												
P O		FITTING, COMPRESSION; OUTLET TUBE 2510 (11568)	EA	1	*	*	*	*	*	*	*	*	9	1
P O		FITTING, COMPRESSION; GLOBE VALVE, 3/8 X 1/4 IN. NPT, 90 DEG 2514 (11568)	EA	1	*	*	*	*	*	*	*	*	9	2

(1) SMR CODE	(2) FEDERAL STOCK NUMBER	(3) DESCRIPTION  REF NUMBER & MFR CODE	(4) USABLE ON CODE	(5) UNIT OF MEAS	(6) 30-DAY DS MAINT ALLOWANCE	(7) 30-DAY GS MAINT ALLOWANCE	(8) 1-YR ALW PER 100 EQUIP CNTGY	(9) DEPOT MAINT ALW PER 100 EQUIP	(10) ILLUS- TRATION							
									(a)		(b)		(c)		FIG. NO.	ITEM NO.
									1-20	21-50	51-100	1-20	21-50	51-100		
X2F		VALVE, GLOBE: AIR RECEIVER M522 (11568)		EA	1					9	3					
P O		NIPPLE, PIPE: GLOBE VALVE, 1/4 X 1 1/2 IN. LG M1016B (11568)		EA	1	*	*	*	*	9	4					
X20		ELBOW, STREET: GLOBE VALVE, 1/4 IN., 90 DEG M980B (11568)		EA	1					9	5					
X20		FITTING, COMPRESSION: OUTLET TUBE 2645 (11568)		EA	1					9	6					
X20		TUBE, OUTLET M1570 (11568)		EA	1					9	7					
X2F		BUSHING: AIR FILTER M951B (11568)		EA	1					9	8					
P O		NUT, HEXAGON: U-BOLT MTG M9399 (11568)		EA	4	*	*	*	*	9	9					
X20		U-BOLT: PIPE MTG M615 (11568)		EA	2					9	10					
P O	5310-732-0558	NUT, HEXAGON: BRACKET MTG SCREW M909A (11568)		EA	2	*	*	*	*	9	11					
P O	5310-637-9541	LOCKWASHER, SPRING: BRACKET MTG SCREW M914A (11568)		EA	2	*	*	*	*	9	12					
P O	5305-269-3213	SCREW, CAP, HEXAGON HEAD: BRACKET MTG M921A (11568)		EA	2	*	*	*	*	9	13					
X20		BRACKET MOUNTING M1568 (11568)		EA	1					9	14					
X20		BUSHING: AIR FILTER M131B (11568)		EA	1					9	15					
P O		NIPPLE, PIPE: DEHYDRATOR, 1/4 X 3 1/2 IN. M1642 (11568)		EA	1	*	*	*	*	9	16					
P O		NIPPLE, PIPE: DEHYDRATOR, 1/4 X 1 1/2 IN. M1016B (11568)		EA	1	*	*	*	*	9	17					
P O		NIPPLE, PIPE: DEHYDRATOR, 1/4 X 4 IN. LG M933B (11568)		EA	1	*	*	*	*	9	18					
		GROUP 07 - STRIP HEATER, THERMOSTAT AND AIR FILTER														
P O	5310-761-6882	NUT, HEXAGON: COVER MTG M1604 (11568)		EA	4	*	*	*	*	10	1					
P O	5305-071-2239	SCREW, MACHINE ROUNDHEAD: COVER MTG M1338 (11568)		EA	4	*	*	*	*	10	2					
X20		COVER, THERMOSTAT M1567 (11568)		EA	1					10	3					
X20		CONNECTOR, CONDUIT: ELECTRICAL M1606 (11568)		EA	2					10	4					
X20		CONDUIT, FLEXIBLE: ELECTRICAL M1605 (11568)		EA	1					10	5					
P O	5930-887-4655	THERMOSTAT: HEATER B200 (84119)		EA	1	*	*	*	*	10	6					
P O	4310-887-4556	HEATER, STRIP: AIR FILTER M623 (11568)		EA	1	*	*	*	*	10	7					
P O		FILTER, AIR 1138-4M (98963)		EA	1	*	*	*	*	11						

(1) SMR CODE	(2) FEDERAL STOCK NUMBER	(3) DESCRIPTION  REF NUMBER & MFR CODE	(4) USABLE ON CODE	(5) UNIT OF MEAS	(6) QTY INC IN UNIT	(6) 30-DAY DS MAINT ALLOWANCE			(7) 30-DAY GS MAINT ALLOWANCE			(8) 1-YR ALW PER 100 EQUIP CNTGY	(9) DEPOT MAINT ALW PER 100 EQUIP	(10) ILLUS- TRATION	
						(a)	(b)	(c)	(a)	(b)	(c)			(a)	(b)
						1-20	21-50	51-100	1-20	21-50	51-100			FIG. NO.	ITEM NO.
X1		BAFFLE; FILTER 16-115 (98963)		EA	1									11	1
P O		ELEMENT, FILTER 85-144 (98963)		EA	1	*	*	*	*	*	*	*	*	11	2
X1		O RING 78-061 (98963)		EA	1									11	3
X1		COVER ASSEMBLY; FILTER 15-430-4 (98963)		EA	1									11	4
P O		COCK, DRAIN; FILTER 43-508 (98963)		EA	1	*	*	*	*	*	*	*	*	11	5
X1		INSERT; BOWL 06-365 (98963)		EA	1									11	6
X20		O RING 78-077 (98963)		EA	1									11	7
X20		RING, RETAINING; O RING 44-028 (98963)		EA	1									11	8
X1		CLAMP, RING ASSEMBLY 15-404 (98963)		EA	1									11	9
X1		BOWL ASSEMBLY; FILTER 11-064 (98963)		EA	1									11	10
		GROUP 08 - DEHYDRATOR													
X20		DEHYDRATOR 4001-20 (98963)		EA	1										12
P O		DEHYDRATOR 4001-2 (98963)		EA	1	*	*	*	*	*	*	*	*	12	
X20		RING, CLAMP 15-404 (98963)		EA	1									12	1
X20		NUT 41-065 (98963)		EA	1									12	2
X1		BOWL, PLASTIC 19-116 (98963)		EA	1									12	3
P O	6850-887-4451	DESICCANT 85-099 (98963) (SILICA GEL)		EA	1	*	*	*	*	*	*	*	*	12	4
P O		DESICCANT 85-060 (98963) (4 AM.S) (USED IN DEHYDRATOR, P/N 4001-2U (98963))		EA	1	*	*	*	*	*	*	*	*	12	5
X1		PACKING, PREFORMED 78-077 (98963)		EA	1									12	6
X1		SCREEN 85-149 (98963)		EA	1									12	7
X1		TUBE 15-435 (98963)		EA	1									12	8
X1		PACKING, PREFORMED 78-042 (98963)		EA	1									12	9
X1		SCREEN W/SUPPORT 15-434 (98963)		EA	1									12	10
X1		PACKING, PREFORMED 78-061 (98963)		EA	1									12	11
X1		COVER ASSEMBLY 06-412-2 (98963)		EA	1									12	12

(1) SMR CODE	(2) FEDERAL STOCK NUMBER	(3) DESCRIPTION  REF NUMBER & MFR CODE	(4) USABLE ON CODE	(5) UNIT OF MEAS	(6) 30-DAY DS MAINT ALLOWANCE	(7) 30-DAY GS MAINT ALLOWANCE	(8) 1-YR ALW PER 100 EQUIP CNTGY	(9) DEPOT MAINT ALW PER 100 EQUIP	(10) ILLUS- TRATION							
									(a)	(b)	(c)	(a)	(b)	(c)	(a)	(b)
									1-20	21-50	51-100	1-20	21-50	51-100	FIG. NO.	ITEM NO.
GROUP 09 - REGULATOR																
P O		REGULATOR; COMPRESSOR 2001-2 (98963)		EA	1	*	*	*	*	*	13					
X1		ADJUSTING SCREW ASSEMBLY 15-292 (98963)		EA	1						13	1				
P O		NUT, HEXAGON; ADJUSTING SCREW 41-007 (98963)		EA	1	*	*	*	*	*	13	2				
X1		DISK, RANGE 49-029 (98963)		EA	1						13	3				
X1		SCREW, CAP; COVER MTG 45-081 (98963)		EA	6						13	4				
X1		COVER; REGULATOR BODY 06-347 (98963)		EA	1						13	5				
X1		DISK, SPRING 06-161 (98963)		EA	1						13	6				
X1		SPRING 70-073H (98963)		EA	1						13	7				
X1		DIAPHRAGM ASSEMBLY 15-238 (98963) (COMPONENT OF KIT, P/N 95-149 (98963))		EA	1						13	8				
X1		O RING 78-023 (98963) (COMPONENT OF KIT, P/N 95-149 (98963))		EA	1						13	9				
P O		PLUG, BOTTOM 06-329 (98963)		EA	1	*	*	*	*	*	13	10				
X1		O RING 78-084 (98963)		EA	1						13	11				
X1		SCREEN 85-075 (98963)		EA	1						13	12				
X1		SPRING 70-053 (98963)		EA	1						13	13				
X1		O RING 78-029 (98963) (COMPONENT OF KIT, P/N 95-149 (98963))		EA	1						13	14				
X1		VALVE ASSEMBLY 15-293 (98963) (COMPONENT OF KIT, P/N 95-149 (98963))		EA	1						13	15				
X1		PLUG, PIPE 43-002 (98963)		EA	1						13	16				
X1		BODY; REGULATOR 06-347-1 (98963)		EA	1						13	17				
P O		KIT, REPAIR 95-149 (98963)  1-DIAPHRAGM  1-O RING  1-O RING  1-VALVE		EA	1	*	*	*	*	*	13					
GROUP 10 - HOSE ASSEMBLY WITH 6 FITTINGS																
P O	4310-874-3179	HOSE ASSEMBLY W/FITTINGS Z538A (11568)		EA	1	*	*	*	*	*	13					

(1) SMR CODE	(2) FEDERAL STOCK NUMBER	(3) DESCRIPTION  REF NUMBER & MFR CODE	(4) USABLE ON CODE	(5) UNIT OF MEAS	(6) QTY INC IN UNIT	(6) 30-DAY DS MAINT ALLOWANCE			(7) 30-DAY GS MAINT ALLOWANCE			(8) 1-YR ALW PER 100 EQUIP CNTGY	(9) DEPOT MAINT ALW PER 100 EQUIP	(10) ILLUS- TRATION	
						(a)	(b)	(c)	(a)	(b)	(c)			(a)	(b)
						1-20	21-50	51-100	1-20	21-50	51-100			FIG. NO.	ITEM NO.
P O	4730-014-6717	COUPLING; HOSE LL2-30 (11568)		EA	1	*	*	*	*	*	*	*	*	14	1
P O		NUT, UNION LL2-39 (11568)		EA	1	*	*	*	*	*	*	*	*	14	2
X1		STEM, HOSE 6362 (53477)		EA	1									14	3
X1		FERRULE, HOSE DD (53477)		EA	1									14	4
X1		HOSE; AIR 11613 (78394)		EA	2									14	5
X1		STEM, HOSE LL2-59 (11568)		EA	1									14	6
X1		FERRULE, HOSE DD (53477)		EA	1									14	7
		GROUP 11 - AIR RECEIVER AND COMPONENTS													
P O		CHUCK, AIR; TIRE PRESSURE GAGE 699 (53477)		EA	1	*	*	*	*	*	*	*	*	15	1
P O		GAGE, TIRE PRESSURE P3618A (11568)		EA	1	*	*	*	*	*	*	*	*	15	2
P F		SCREW, DRIVE ROUNDHEAD; PLATE MTG M1058A (11568)		EA	4	*	*	*	*	*	*	*	*	15	3
X2F		PLATE, INSTRUCTION; COMPRESSOR M811 (11568)		EA	1									15	4
P O	5305-180-0005	SCREW, DRIVE ROUNDHEAD; PLATE MTG M835 (11568)		EA	4	*	*	*	*	*	*	*	*	15	5
X20		PLATE, IDENTIFICATION; COMPRESSOR P3625A (11568)		EA	1									15	6
P O	6685-764-7623	GAGE, PRESSURE; COMPRESSOR AIR AU2951 (61349)		EA	2	*	*	*	*	*	*	*	*	15	7
P O	4820-019-3019	SAFETY VALVE ASSEMBLY; 200 PSI Z206-200 (11568)		EA	1	*	*	*	*	*	*	*	*	15	8
X20		TEE, PIPE; PRESSURE GAGE MTG M1003B (11568)		EA	1									15	9
X20		NIPPLE, PIPE; PRESSURE GAGE, 1/4 X 1 1/2 IN. M1016B (11568)		EA	1									15	10
P O		NUT, COMPRESSION; AFTERCOOLER TUBE M1244 (11568)		EA	1	*	*	*	*	*	*	*	*	15	11
P O		VALVE, UNLOADER CHECK; AFTERCOOLER TUBE CA12 (00415)		EA	1	*	*	*	*	*	*	*	*	15	12
X20		BUSHING; AFTERCOOLER TUBE M950B (11568)		EA	1									15	13
P O		NUT, COMPRESSION; AFTERCOOLER TUBE M1244 (11568)		EA	1	*	*	*	*	*	*	*	*	15	14
X20		TUBE, AFTERCOOLER; COMPRESSOR M1596 (11568)		EA	1									15	15
X20		FERRULE, COMPRESSION; AFTERCOOLER TUBE M1245 (11568)		EA	1									15	16
X20		BUSHING; AFTERCOOLER TUBE M950B (11568)		EA	1									15	17
P O		LOCKNUT, CONDUIT; HANDLE MTG M1312 (11568)		EA	1	*	*	*	*	*	*	*	*	15	18
X20		HANDLE; COMPRESSOR M620 (11568)		EA	1									15	19

(1) SMR CODE	(2) FEDERAL STOCK NUMBER	(3) DESCRIPTION  REF NUMBER & MFR CODE	(4) USABLE ON CODE	(5) UNIT OF MEAS	(6) QTY INC IN UNIT	(6) 30-DAY DS MAINT ALLOWANCE			(7) 30-DAY GS MAINT ALLOWANCE			(8) 1-YR ALW PER 100 EQUIP CNTGY	(9) DEPOT MAINT ALW PER 100 EQUIP	(10) ILLUS- TRATION	
						(a)	(b)	(c)	(a)	(b)	(c)			(a)	(b)
						1-20	21-50	51-100	1-20	21-50	51-100			FIG. NO.	ITEM NO.
P 0		FITTING, COMPRESSION; PRESSURE TUBE 2499 (11568)		EA	2	*	*	*	*	*	*	*	*	15	20
X20		TUBE, PRESSURE; COMPRESSOR M1569 (11568)		EA	1									15	21
P 0	4820-849-1220	COCK, DRAIN; AIR RECEIVER 1825A (92976)		EA	1	*	*	*	*	*	*	*	*	15	22
X20		AIR, RECEIVER ASSEMBLY; 30 GAL P3620C (11568)		EA	1									15	23
P 0		PLUG; AIR RECEIVER M998B (11568)		EA	2	*	*	*	*	*	*	*	*	15	24
P 0		PLUG; AIR RECEIVER M504 (11568)		EA	2	*	*	*	*	*	*	*	*	15	25
P 0	5310-732-0558	NUT, HEXAGON; CASTER MTG SCREW M909A (11568)		EA	16	*	*	*	*	*	*	*	*	15	26
P 0	5310-637-9541	LOCKWASHER; CASTER MTG SCREW M914A (11568)		EA	16	*	*	*	*	*	*	*	*	15	27
P 0	5305-269-3211	SCREW, CAP, HEXAGON HEAD; CASTER MTG M472 (11568)		EA	16	*	*	*	*	*	*	*	*	15	28
X20		CASTER, STATIONARY; AIR RECEIVER 12DH06201R (96266)		EA	2									15	29
P 0		FITTING, LUBRICATION; CASTER		EA	6	*	*	*	*	*	*	*	*	15	30
X20		CASTERS, SWIVEL; AIR RECEIVER 12DH06201 (96266)		EA	2									15	31

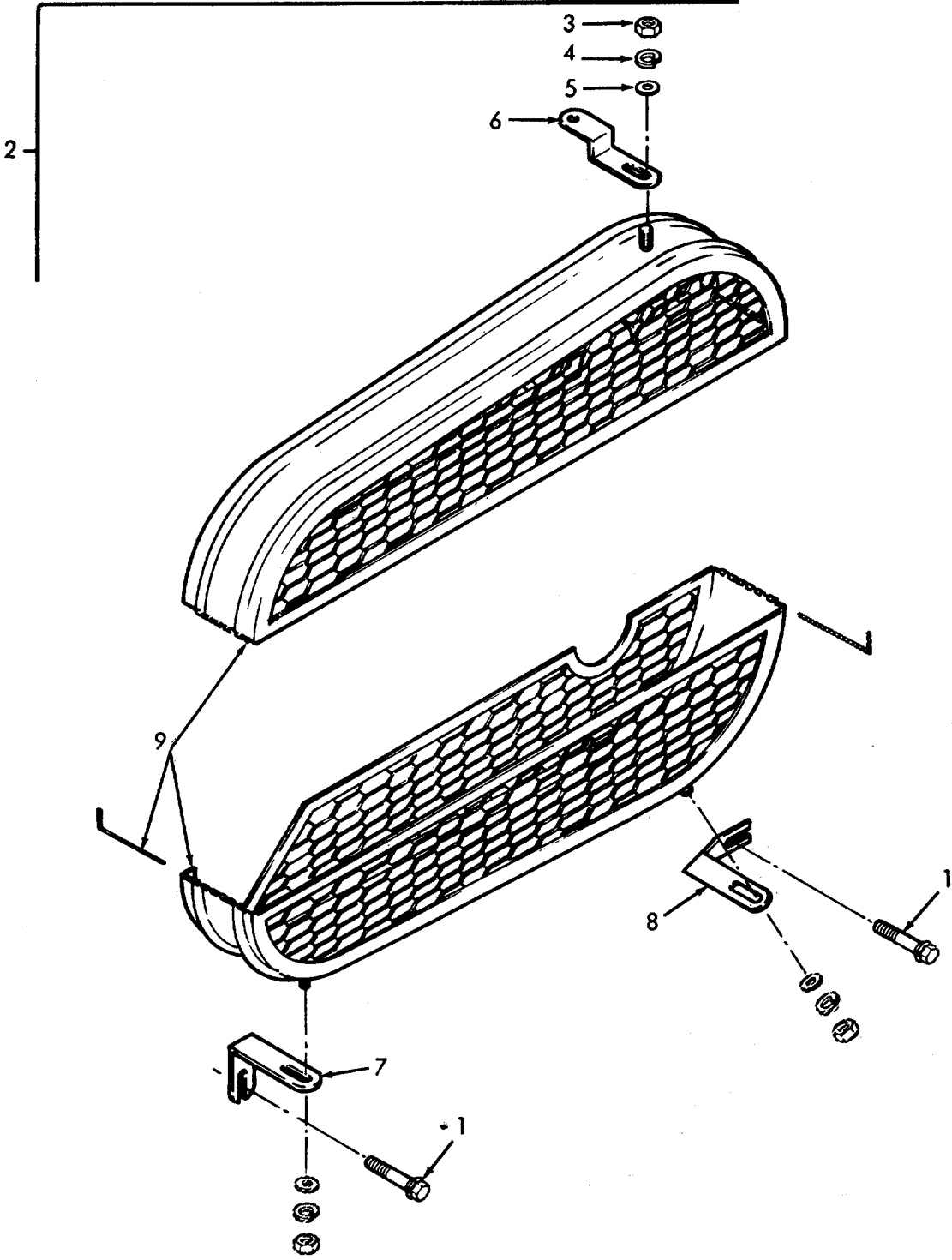
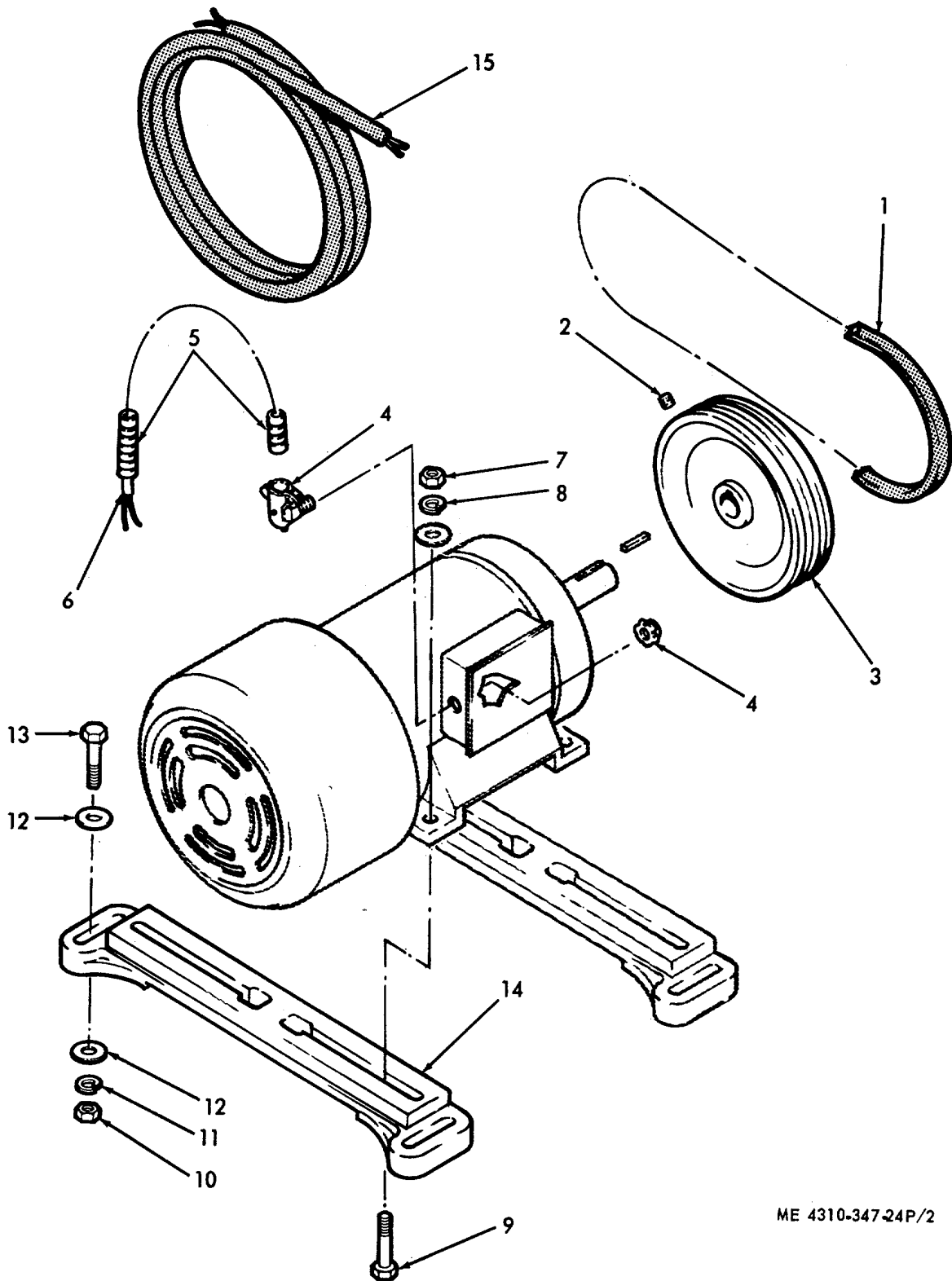


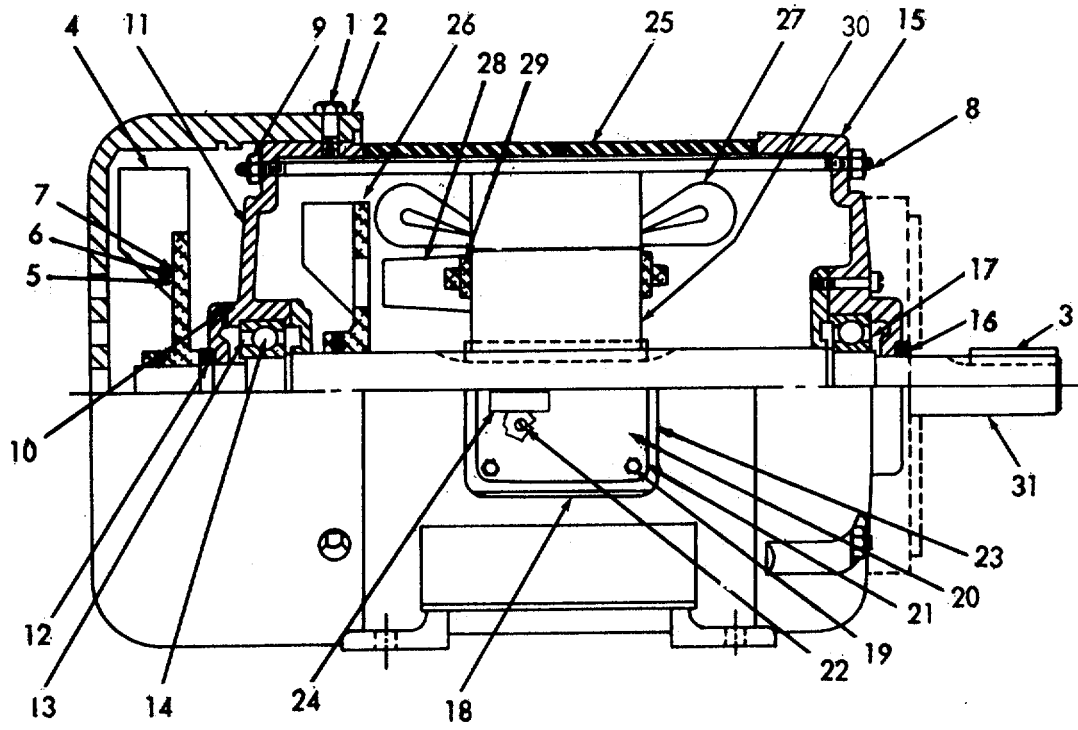
Figure 1. Belt guard shell and brackets.



ME 4310-347-24P/2

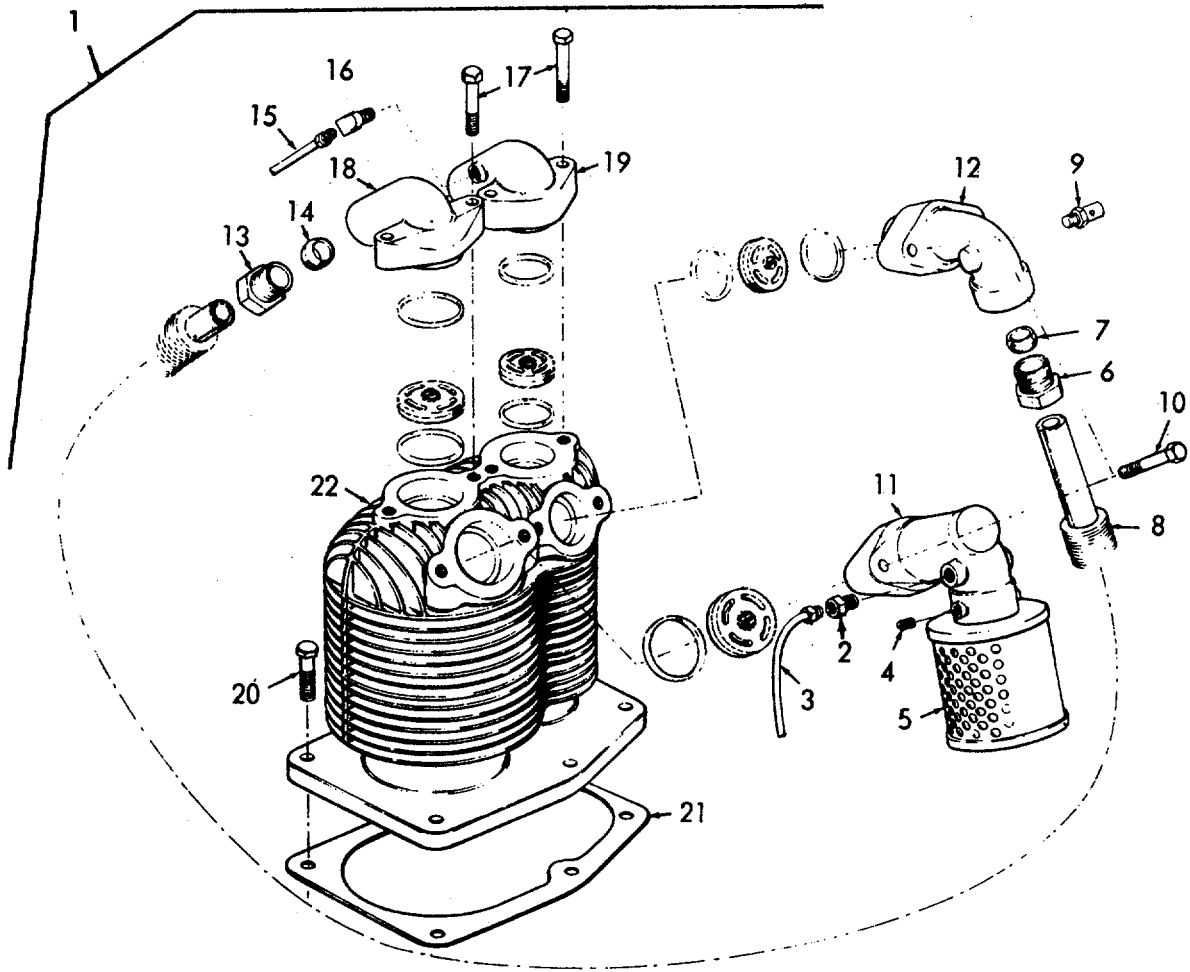
Figure 2. V Belts, pulley, motor rail, electrical conduit, and wiring.





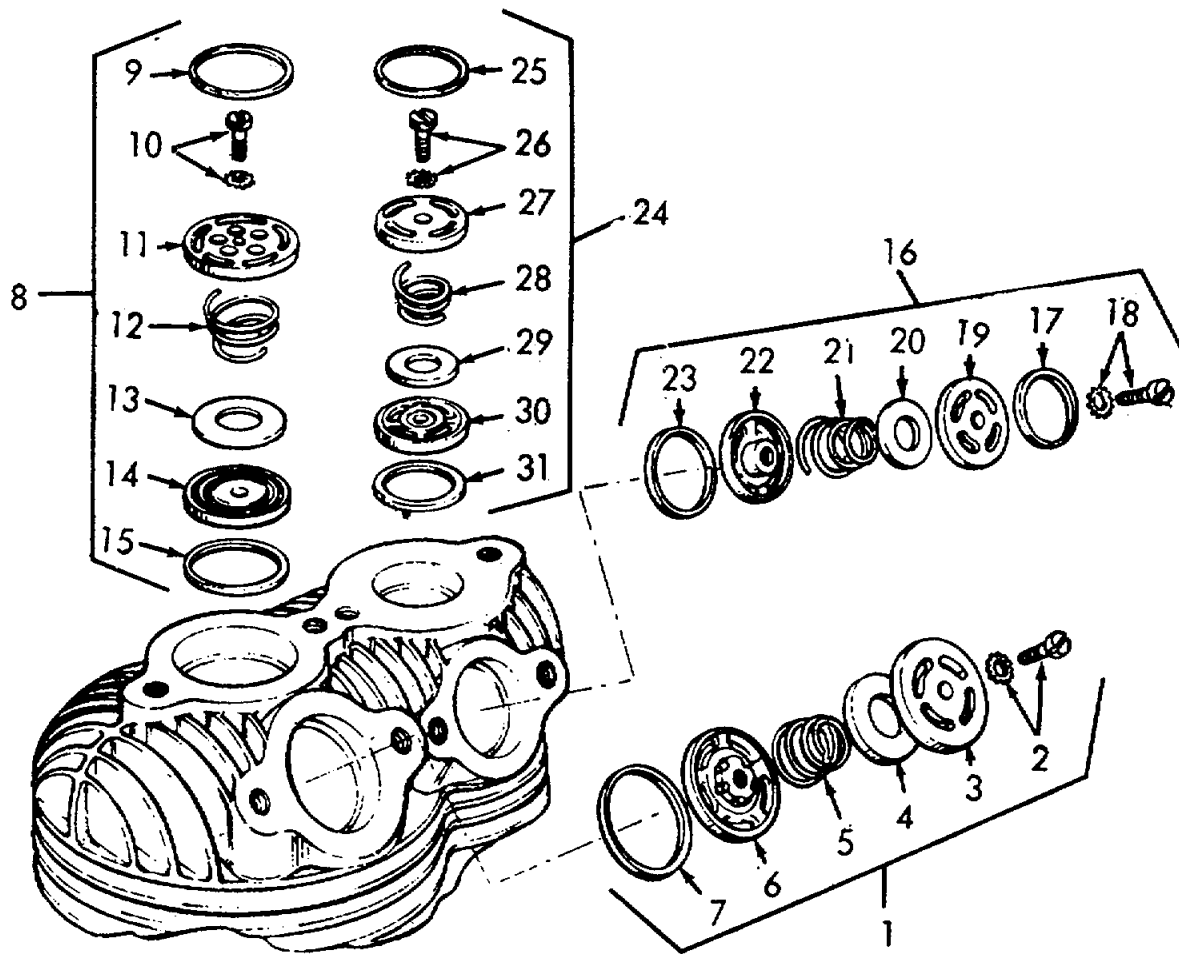
ME 4310-247-24P/3

Figure 3. Electrical motor.



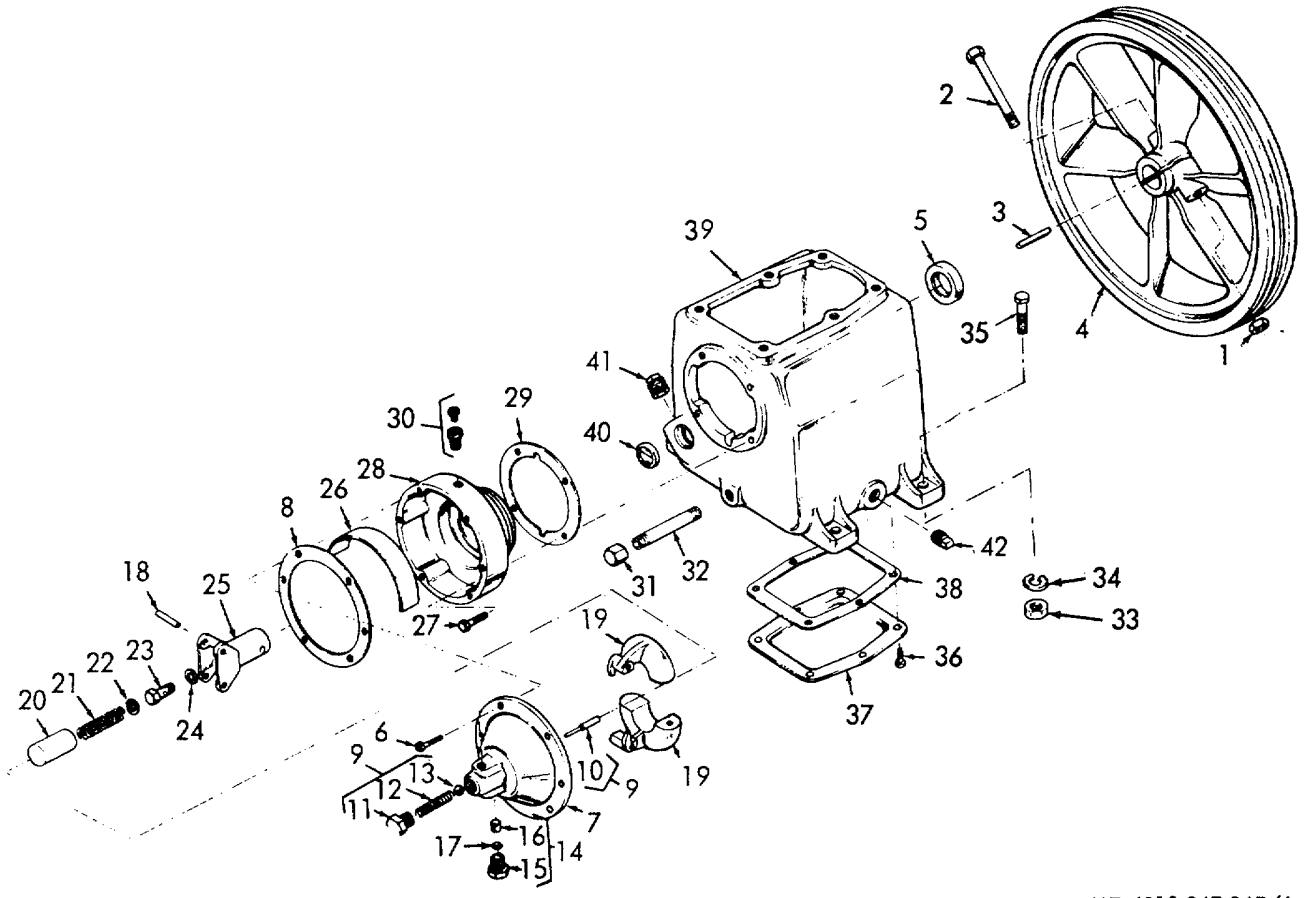
ME 4310-347-24P/4

Figure 4. Compressor cylinder and manifold assemblies.



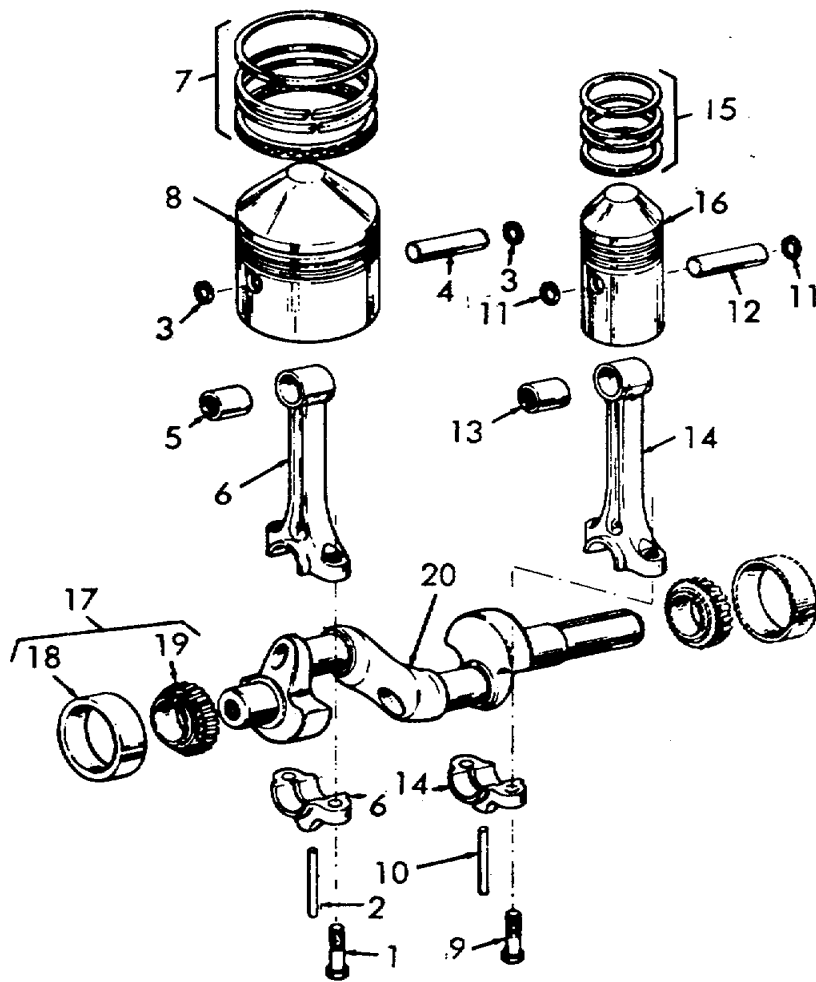
ME 4310-347-24P/5

Figure 5. Compressor valve assemblies.



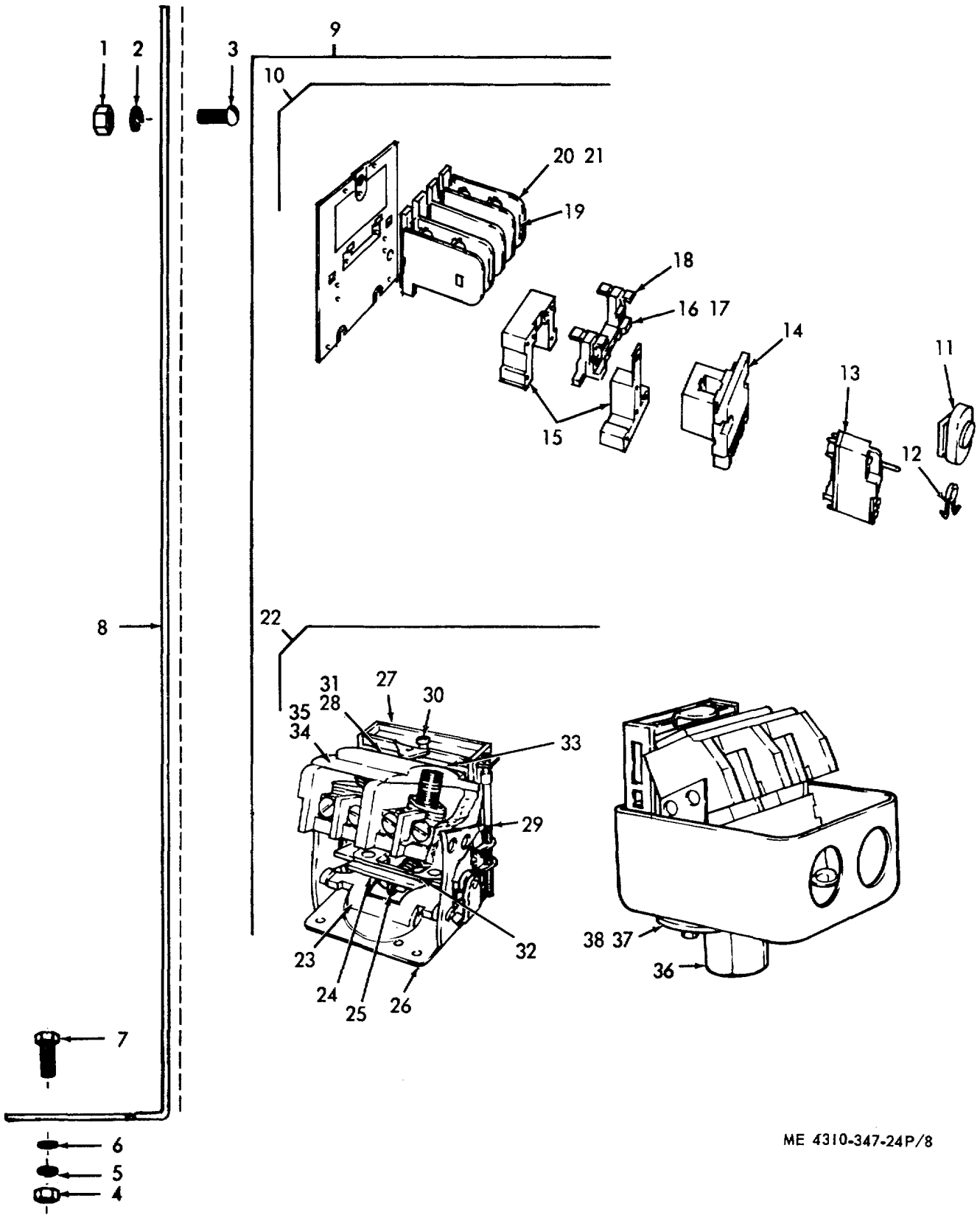
ME 4310-347-24P/6

Figure 6. Crankcase and unloader assembly.



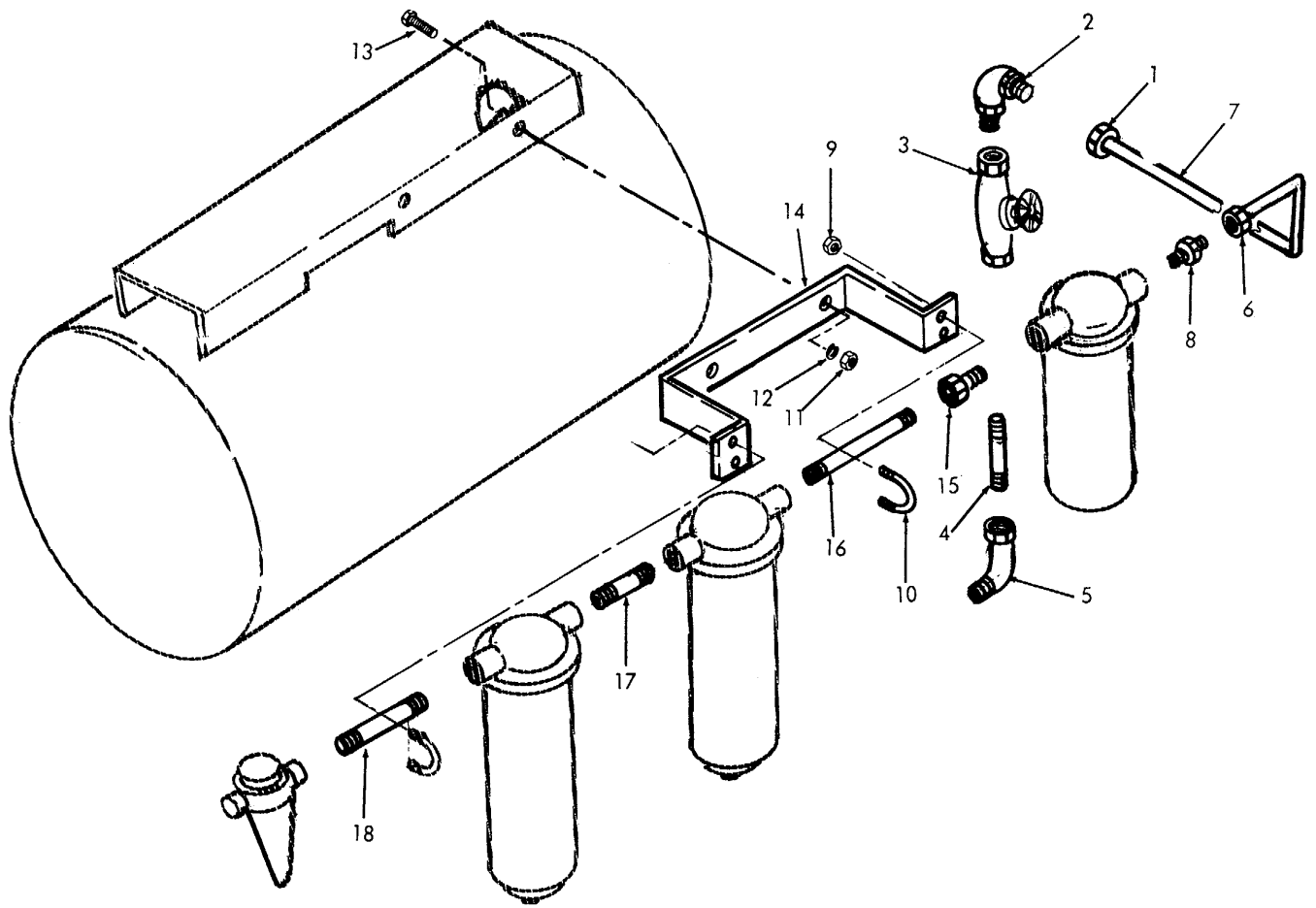
ME 4310-347-24P/7

Figure 7. Crankshaft, piston and connecting rod assemblies.



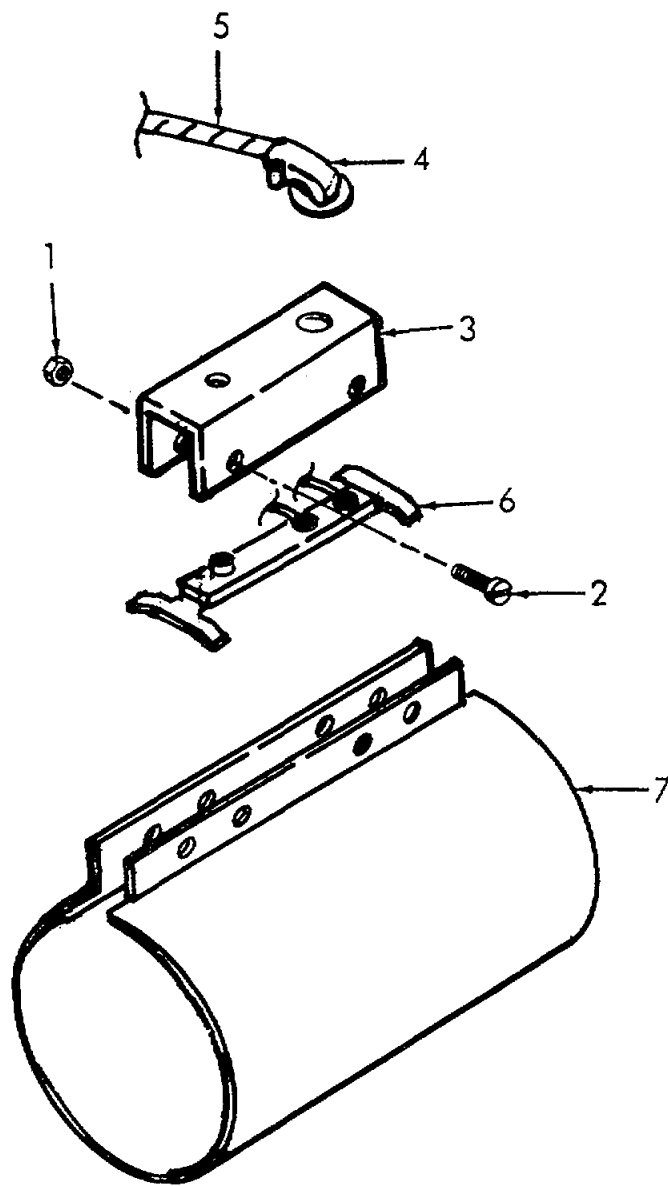
ME 4310-347-24P/8

Figure 8. Magnetic starter with pressure switch and bracket



ME 4310-347-24P/9

Figure 9. Globe valve, outlet tube, piping, and mounting bracket.



ME 4310-347-24P/10

Figure 10. Strip heater, thermostat, and electrical conduit.



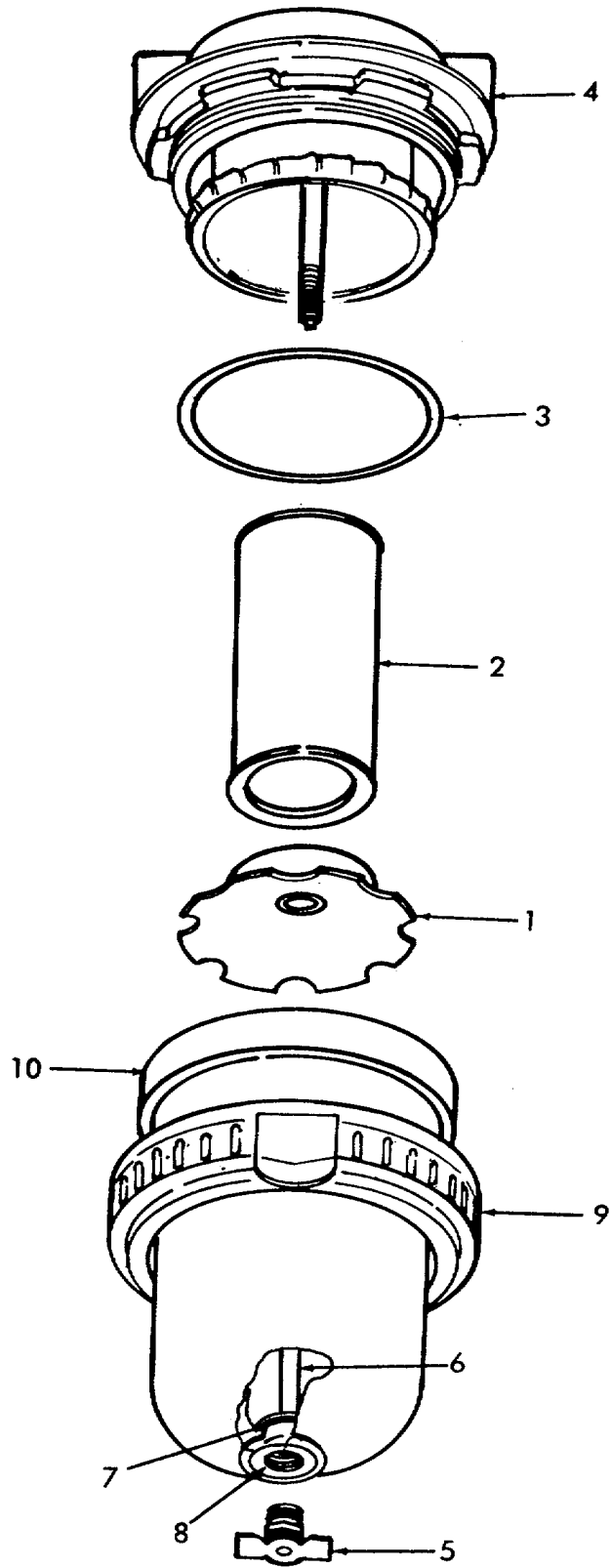
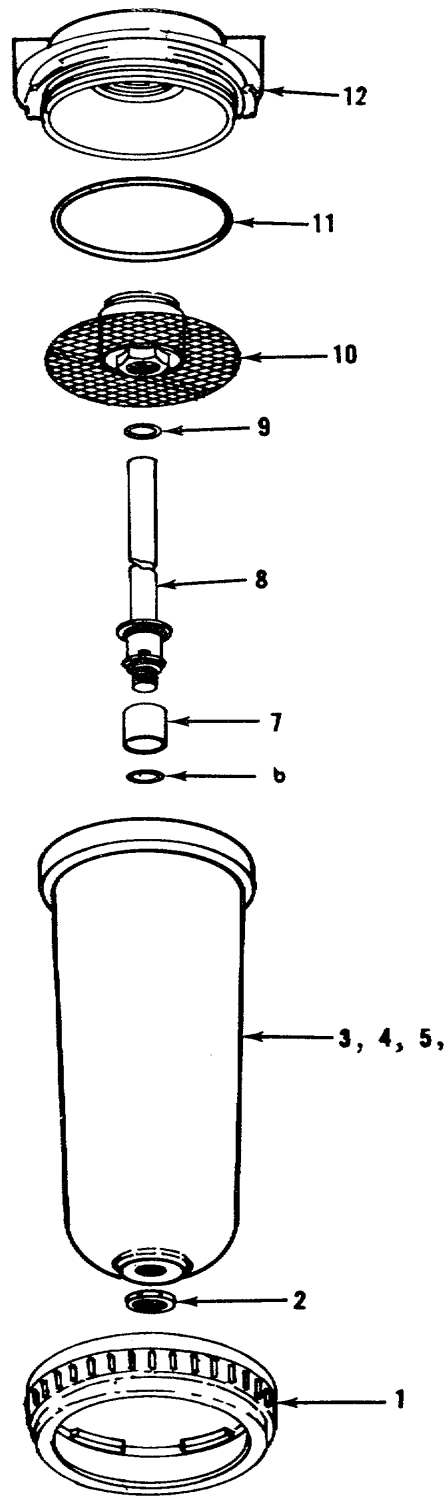


Figure 11. Air filter assembly.



ME 4310-347-24P/12

Figure 12. Dehydrator.

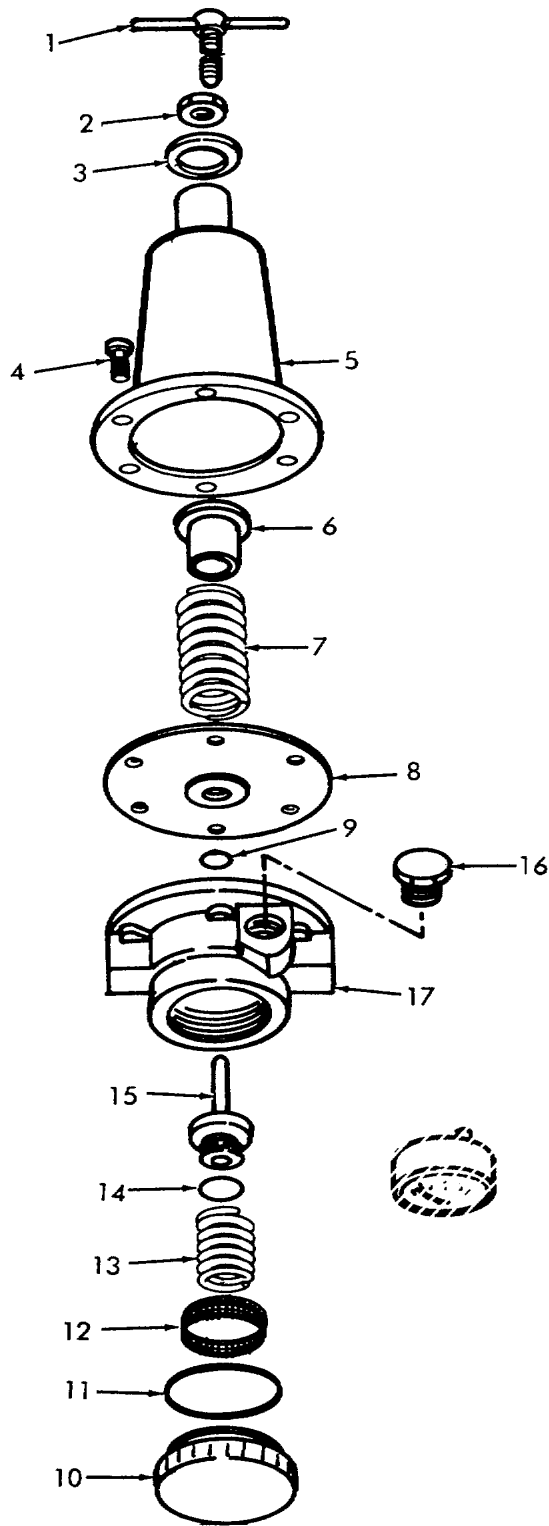


Figure 13. Regulator.

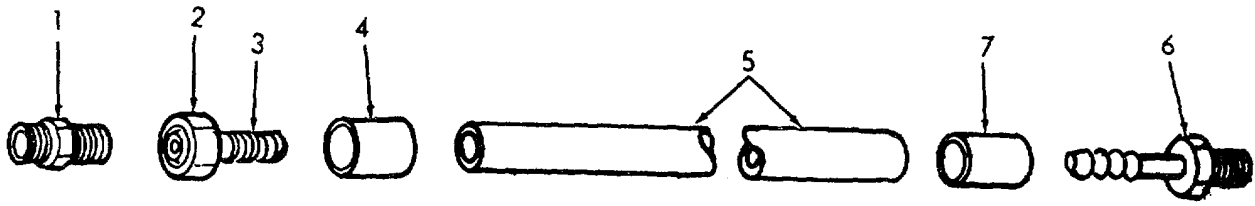
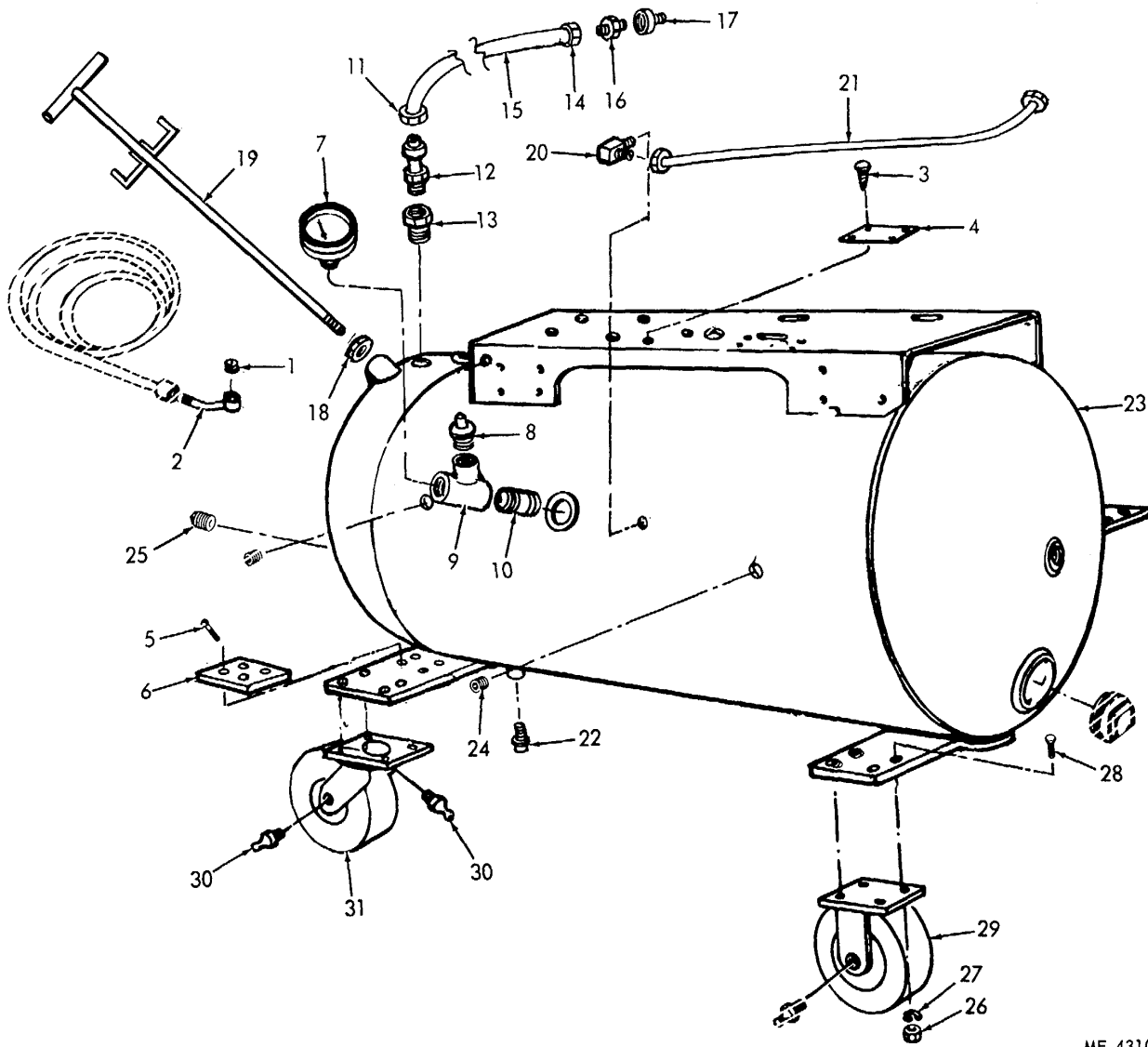


Figure 14. Hose assembly with fittings.



ME 4310-347-24P/15

Figure 15. Air receiver and components.

**SECTION VII. INDEX FEDERAL STOCK NUMBER AND REFERENCE NUMBER  
CROSS-REFERENCE TO FIGURE AND ITEM NUMBER**

**NATIONAL STOCK NUMBER INDEX**

<b>STOCK NUMBER</b>	<b>FIG.</b>	<b>ITEM</b>	<b>STOCK NUMBER</b>	<b>FIG.</b>	<b>ITEM</b>
2990-863-0926	6	25	5310-732-0558	6	33
3030-879-4844	2	1		8	4
3110-100-0516	7	18		9	11
3110-100-3150	7	19		15	26
3110-100-6212	6	13	5310-761-6882	8	1
3110-516-5551	3	14		10	1
4310-013-7320	6	9	5310-880-7744	1	3
4310-413-4020		7	5310-887-4598	3	13
4310-413-4021		7	5310-899-9151	6	1
4310-430-3488	4	1	5315-846-4881	6	18
4310-450-9213	4	5	5330-450-4130	4	21
4310-477-9775	7	15	5330-584-8999	5	7
4310-585-4283	6	8	5330-584-9011	5	9
4310-616-4372	5	21		5	15
	5	28	5330-585-7546	6	38
4310-616-4373	6	12	5330-599-5888	5	17
4310-616-4374	5	5		5	23
4310-619-0215	5	12		5	25
4310-625-6747	6	10		5	31
4310-625-6752	5	30	5330-724-0793	6	5
4310-625-6754	5	19	5340-805-0825	8	31
4310-625-6760	5	3	5930-521-8471	8	
4310-631-3396	5	24	5930-756-9452	8	26
4310-631-3397	5	16	5930-887-4655	10	6
4310-631-3398	5	8	6110-820-0708	8	28
4310-631-3399	5	1	6680-377-4915	6	40
4310-773-7986	7	7	6685-764-7623	15	7
4310-850-5541	6	21	6850-887-4451	12	4
4310-874-3179	14				
4310-875-4107	5				
4310-884-4582	6	20			
4310-887-4556	10	7			
4310-896-2105	6	19			
4310-896-5984	6	14			
4310-957-5652	6				
4540-838-3539	8	12			
4730-014-6717	14	1			
4730-228-1619	6	31			
4730-263-3124	6	41			
4730-851-6259	4	7			
	4	14			
4820-019-3019	15	8			
4820-849-1220	15	22			
5305-045-1988	4	20			
5305-068-0501	8	3			
5305-071-1776	6	2			
5305-071-2239	10	2			
5305-180-0005	15	5			
5305-207-1798	6	6			
5305-225-8499	6	36			
5305-225-9084	1	1			
5305-269-3211	6	27			
	15	28			
5305-269-3213	2	9			
	9	13			
5305-269-3214	2	13			
	6	35			
5305-269-3215	4	10			
	4	17			
5305-269-9511	8	7			
5305-710-4190	6	23			
5305-957-7824	5	10			
	5	18			
	5	26			
5310-081-4219	1	5			
5310-087-7493	2	12			
	6	22			
	8	6			
5310-209-0965	6	24			
5310-407-9566	1	4			
5310-582-5965	8	2			
5310-625-6755	5	20			
5310-625-6758	5	13			
5310-625-6761	5	4			
5310-637-9341	8	5			
5310-637-9541	2	8			
	2	11			
	6	34			
	9	12			
	15	27			
5310-732-0558	2	7			
	2	10			

**Section IV. INDEX-FEDERAL STOCK NUMBER AND REFERENCE NUMBER  
CROSS-REFERENCE TO FIGURE AND ITEM NUMBER**

<u>REFERENCE NO.</u>	<u>MFR CODE</u>	<u>FIG. NO.</u>	<u>ITEM NO.</u>	<u>REFERENCE NO.</u>	<u>MFR CODE</u>	<u>FIG. NO.</u>	<u>ITEM. NO.</u>
AA863723-10	38151	3	25	M1569	11568	15	21
AA64152A1A	38151	3	4	M1570	11568	9	7
4464536C	38151	3	18	M1573	11568	B	8
ABL84F35C1	38151	3	30	'1596	11568	15	15
4561046-5	38151	3	29	M1604	11568	10	1
A4561061-14	38151	3	28	M1605	11568	10	5
AU2951	61349	15	7	M1606	11568	2	4
460128-155	38151	3	8		11568	10	4
A64011AC	38151	3	11	M1607	11568	2	5
A64145AC	38151	3	15	M1608	11568	2	6
A64199-600	38151	3	24	M1642	11568	9	16
A64285-2	38151	3	16	M6 32	11568	4	4
A64380-675	38151	3	31	M458	11568	6	36
A64537C	38151	3	20	M459	11568	6	41
A64661AA	38151	3	26	M461	11568	6	31
A66	11568	2	1	M465	11568	6	1
A7551-185	38151	3	5	M466	11568	6	24
A7551-95	38151	3	9	M672	11568	6	27
A7661-17	38151	3	13		11568	8	7
A7848-17	38151	3	14		11568	15	28
A7848-30	38151	3	17	M492	11568	6	32
A7964-1	38151	3	12	4504	11568	6	62
R200	84119	10	6		11568	15	25
CA12	00415	15	12	M52090	11568	2	3
C64153C	38151	3	2	M522	11568	9	3
C64536A	38151	3	23	M568	11568	2	2
DO	53477	14	4	H615	11568	9	10
	53477	14	7	M620	11568	15	19
010037-1	23826	8	31	M623	11568	10	7
D10456-1	23826	8	32	MS11	11568	15	4
01366-1	23826	8	24	M817	11568	4	20
016577-1	23826	8	15	M835	11568	15	5
01673-1	23826	8	34	M854	11568	1	8
0274-1	23826	8	37	M855	11568	1	6
0276-1	23826	8	28	M857	11568	1	7
02936-31	23826	8	14	M909A	11568	2	7
0317-3	23826	8	25		11568	2	10
0323-1	23826	8	30		11568	6	33
0357-1	23826	8	26		11568	8	4
0467-1	23826	8	38		11568	9	11
050876-1	23826	8	17		11568	15	26
350912-13	23826	8	20	491A	11568	1	4
050912-50	23826	8	21	M912A	11568	1	5
050937-10	23826	8	16	M914A	11568	2	8
09078-1	23826	8	23		11568	2	11
09096-1	23826	8	29		11568	6	34
09271-15	23826	8	36		11568	8	5
09680-1	23826	8	33		11568	9	12
09935-1	23826	8	27		11568	15	27
09943-10	23826	8	35	M919A	11568	8	2
E4850-1	38151	3	10	M921A	11568	2	9
E61823-1	38151	3	21		11568	9	13
E7520-1255	38151	3	7	M929A	11568	8	3
E7531-37S	38151	3	1	M9338	11568	9	18
	38151	3	22	M9354	11568	1	3
E7545-255	38151	3	19	M939A	11568	8	1
E7653-2S	38151	3	6	M9399	11568	9	9
E8090-8	38151	3	3	M944A	11568	4	10
HCL8467-4	38151	3	27		11568	4	17
H34	23826	8	12	M9508	11568	15	13
H41	23826	8	12		11568	15	17
LL2-39	11568	14	2	M9518	11568	9	8
LL2-40	11568	14	1	M974	11568	6	17
LL2-59	11568	14	66	98A	11568	6	16
M10038	11568	15	9	M9808	11568	9	5
M1016B	11568	9	4	M9988	11568	15	24
	11568	9	17	NRIOI	11568	6	11
	11568	15	10	NR104	11568	6	26
M104b	11568	6	15	NRTA	11568	6	4
M105BA	11568	15	3	NRBOA	11568	6	28
M1244	11568	15	11	P36174	11568	2	15
	11568	15	14	P3618A	11568	15	2
M1245	11568	15	16	P3620C	11568	15	23
M1312	11568	15	18	P3625A	11568	15	6
M1318	11568	9	15	RE10-100A	11568	6	7
M1338	11568	10	2	REIO-2E	11568	4	18
M1459	11568	1	1	RE10-51A	11568	5	11
M146	11568	2	14	RE10-59	11568	5	12
M1460	11568	2	13	REIO-61	11568	5	13
	11568	6	35	REID-62	11568	5	20
M1567	11568	10	3		11568	5	29
M1568	11568	9	14	REIO-63A	11568	5	9

**Section IV. INDEX-FEDERAL STOCK NUMBER AND REFERENCE NUMBER  
CROSS-REFERENCE TO FIGURE AND ITEM NUMBER**

<u>REFERENCE NO.</u>	<u>MFR CODE</u>	<u>FIG. NO.</u>	<u>ITEM NO.</u>	<u>REFERENCE NO.</u>	<u>MFR CODE</u>	<u>FIG. NO.</u>	<u>ITEM NO.</u>
RE10--63A	11568	5	15	1117	11568	5	8
RE10-65A	11568	5	14	1118	11568	5	1
RE14-58	11568	5	5	Z124-14A	11568	6	9
RE14-70	11568	5	4	1130	11568	6	
RE14-71A	11568	5	3	1179C	11568	7	7
RE14-72	11568	5	6	1189C	11568	7	15
RE14-75A	11568	5	7	1206-200	11568	15	8
RE14-81	11568	5	2	Z307	11568	1	2
RE4-105	11568	6	2	1307-1	11568	1	9
RE4-12A	11568	4	8	1499	11568	15	20
RE7-14	11568	6	40	1509	11568	4	2
RET-52A	11568	5	22		11568	6	30
RE7-53A	11568	5	27	1510	11568	9	1
RE7-56A	11568	5	19	1513	11568	4	16
RE7-57A	11568	5	30	Z514	11568	9	2
RE7-60	11568	5	21	Z538A	11568	14	
	11568	5	28	Z60A	11568	6	14
RE7-81	11568	5	10	1645	11568	9	6
	11568	5	18	Z65A	11568	4	5
	11568	5	26	Z67-75	11568	4	9
R10-102	11568	7	3	06-161	98963	13	6
	11568	7	11	06-329	98963	13	10
R10-20	11568	7	1	06-347	98963	13	5
	11568	7	9	06-347-1	98963	13	17
R10-21	11568	7	4	06-365	98963	11	6
	11568	7	12	06-412-2	98963	12	12
RI0-24	11568	7	10	11-064	98963	11	10
RIO-3A	11568	7	6	1138-4M	98963	11	
R10-37	11568	7	5	11613	78394	14	5
	11568	7	13	120H06201	96266	15	31
RIO-4	11568	7	16	12DHO6201R	96266	15	29
R10-5	11568	7	20	14DA	23826	8	10
RIOB	11568	4	1	14138A	60038	7	19
R1082	11568	4	11	14276	60038	7	18
R15-3	11568	7	14	15-238	98963	13	8
R15-4	11568	7	8	15-292	98963	13	1
R30-24	11568	7	2	15-293	98963	13	15
sR250A	11568	4	15	15-404	98963	11	9
sE14-30	11568	6	29		98963	12	1
SE14-30A	11568	6	29	15-430-4	98963	11	4
SE14-30B	11568	6	29	15-434	98963	12	10
SE14-30C	11568	6	29	15-435	98963	12	8
SE14-8	11568	6	6	16-115	98963	11	1
SE14-89	11568	6	8	182TCFR7043AA	38151	3	
SES-2C	11568	4	12	1825A	92976	15	22
SE5-28A	11568	5	17	19-116	98963	12	3
	11568	5	23	2001-2	98963	13	
	11568	5	25	21S312-1625	06145	6	18
	11568	5	31	212112D	80201	6	5
SE5-41	11568	4	6	4001-2	98963	12	
	11568	4	13	4001-20	98963	12	
SE5-42	11568	4	7	41-007	98963	13	2
	11568	4	14	41-065	98963	12	2
SE5-8	11568	6	3	43-002	98963	13	16
SE5-82	11568	6	19	43-508	98963	11	5
SE5-83B	11568	6	25	44-028	98963	11	8
SE5-86B	11568	6	10	45-081	98963	13	4
SE5-87	11568	6	20	48DBIIA	23826	8	13
SE5-88	11568	6	22	49-029	98963	13	3
	11568	8	6	50889488	23826	8	11
SE5-90	11568	6	21	6362	53477	14	3
SE5-91	11568	6	12	69HAH	23826	8	22
SE5-94	11568	6	23	699	53477	15	1
SE5-95	11568	6	13	70-053	98963	13	13
SE5-8	11568	2	12	70-073H	98963	13	7
UB375	11568	4	3	75CA14	23826	8	19
WR14-6A	11568	4	22	75DA14	23826	8	18
WRLSA	11568	6	37	75HA69	23826	8	
WRZB	11568	4	19	78-023	98963	13	9
WR29A	11568	4	21	78-029	98963	13	14
WR318	11568	6	38	78-042	98963	12	9
WR9A	11568	6	39	78-061	98963	1	3
ZNR16	11568	7	17		98963	12	11
IR103	11568	7		78-077	98963	11	7
ZRIO-34	11568	1			98963	12	6
ZRIO-4	11568	7	78-084		98963	13	11
ZR15	11568	7		820A148HAI	23826	8	9
ZR15-4	11568	7	85-059		98963	12	4
7102	11568	5	85-060		98963	12	5
Z102G	11568	5	85-075		98963	13	12
Z113	11568	5	16	85-144	98963	11	2
Z115	11568	5	24	85-149	98963	12	7
				95-119	98963	13	



By Order of the Secretary of the Army:

CREIGHTON W. ABRAMS  
*General United States Army*  
*Chief of Staff*

Official:

VERNE L. BOWERS  
*Major General, United States Army,*  
*The Adjutant General.*

Distribution:

To be distributed in accordance with DA Form- 12-25A, (qty req block no. 6) Organizational maintenance requirements for Air Compressors, 5 C,FM.

- U.S. GOVERNMENT PRINTING OFFICE : 1993 O - 337-385

RECOMMENDED CHANGES TO EQUIPMENT TECHNICAL PUBLICATIONS



THEN... JOT DOWN THE DOPE ABOUT IT ON THIS FORM, CAREFULLY TEAR IT OUT, FOLD IT AND DROP IT IN THE MAIL!

**SOMETHING WRONG WITH THIS PUBLICATION?**

FROM: (PRINT YOUR UNIT'S COMPLETE ADDRESS)

DATE SENT

PUBLICATION NUMBER

PUBLICATION DATE

PUBLICATION TITLE

BE EXACT... PIN-POINT WHERE IT IS

PAGE NO.

PARA-GRAPH

FIGURE NO.

TABLE NO.

IN THIS SPACE TELL WHAT IS WRONG AND WHAT SHOULD BE DONE ABOUT IT:

TEAR ALONG PERFORATED LINE

PRINTED NAME, GRADE OR TITLE, AND TELEPHONE NUMBER

SIGN HERE:

DA FORM 2028-2  
1 JUL 79

PREVIOUS EDITIONS ARE OBSOLETE.

P.S.—IF YOUR OUTFIT WANTS TO KNOW ABOUT YOUR RECOMMENDATION MAKE A CARBON COPY OF THIS AND GIVE IT TO YOUR HEADQUARTERS.

